

Recombinant Human GLP1R Protein (Fc Tag)

Catalog Number:PKSH033669



Note: Centrifuge before opening to ensure complete recovery of vial contents.

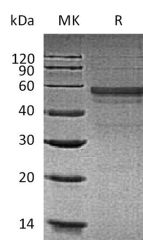
Description

Synonyms	Glucagon-like peptide 1 receptor;GLP-1 receptor;GLP-1-R
Species	Human
Expression Host	HEK293 Cells
Sequence	Arg24-Tyr145
Accession	P43220
Calculated Molecular Weight	41.2 kDa
Observed molecular weight	50-75 kDa
Tag	C-Fc

Properties

Purity	> 90 % as determined by reducing SDS-PAGE.
Endotoxin	< 1.0 EU per µg of the protein as determined by the LAL method.
Storage	Generally, lyophilized proteins are stable for up to 12 months when stored at -20 to -80°C. Reconstituted protein solution can be stored at 4-8°C for 2-7 days. Aliquots of reconstituted samples are stable at < -20°C for 3 months.
Shipping	This product is provided as lyophilized powder which is shipped with ice packs.
Formulation	Lyophilized from a 0.2 µm filtered solution of PBS, pH 7.4. Normally 5 % - 8 % trehalose, mannitol and 0.01% Tween80 are added as protectants before lyophilization. Please refer to the specific buffer information in the printed manual.
Reconstitution	Please refer to the printed manual for detailed information.

Data



> 90 % as determined by reducing SDS-PAGE.

Background

GLP1R belongs to the G-protein coupled receptor 2 family that is synthesized as a 172 amino acid (aa). GLP1R is expressed in pancreas, lung, heart, kidney, hypothalamus, and stomach. It may form homodimers and heterodimers with GIPR. GLP1R is a receptor for glucagon-like peptide 1. The activity of this receptor is mediated by G proteins which activate adenylyl cyclase.

For Research Use Only

A Reliable Research Partner in Life Science and Medicine

Toll-free: 1-888-852-8623

Web: www.elabscience.com

Tel: 1-832-243-6086

Email: techsupport@elabscience.com

Fax: 1-832-243-6017