

Recombinant Human GALK1/Galactokinase Protein (His Tag)

Catalog No. PKSH033673

Note: Centrifuge before opening to ensure complete recovery of vial contents.

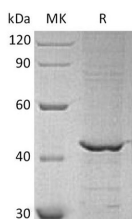
Description

Synonyms	Galactokinase;Galactose Kinase;GALK1;GALK
Species	Human
Expression Host	E.coli
Sequence	Met1-Leu392
Accession	P51570
Calculated Molecular Weight	43.3 kDa
Observed molecular weight	45 kDa
Tag	C-His
Bioactivity	Not validated for activity

Properties

Purity	> 85 % as determined by reducing SDS-PAGE.
Endotoxin	< 1.0 EU per µg of the protein as determined by the LAL method.
Storage	Store at < -20°C, stable for 6 months. Please minimize freeze-thaw cycles.
Shipping	This product is provided as liquid. It is shipped at frozen temperature with blue ice/gel packs. Upon receipt, store it immediately at < - 20°C.
Formulation	Supplied as a 0.2 µm filtered solution of 20mM Tris-HCl, 150mM NaCl, pH 8.0.
Reconstitution	Not Applicable

Data



> 85 % as determined by reducing SDS-PAGE.

Background

Galactokinase belongs to the GHMP kinase family and GalK subfamily. Galactokinase is more important to the galactose metabolism pathway. It modifies galactose to create a similar molecule called Galactose-1-Phosphate. Thus, a series of additional steps converts Galactose-1-Phosphate to another simple sugar Glucose; which is the main energy source for most cells. Galactokinase deficiency results in Galactosemia II; an autosomal recessive deficiency characterized by congenital cataracts during infancy and presenile cataracts in the adult population. The cataracts are secondary to accumulation of Galactitol in the lenses.

For Research Use Only