

Recombinant Human Ezrin/EZR Protein

Catalog Number:PKSH033684



Note: Centrifuge before opening to ensure complete recovery of vial contents.

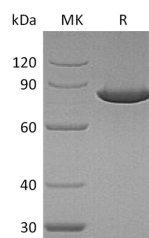
Description

Synonyms	Ezrin;Cytovillin;Villin-2;p81;EZR;VIL2
Species	Human
Expression Host	E.coli
Sequence	Met1-Leu586
Accession	P15311
Calculated Molecular Weight	69.4 kDa
Observed molecular weight	80 kDa
Tag	None

Properties

Purity	> 95 % as determined by reducing SDS-PAGE.
Endotoxin	< 1.0 EU per µg of the protein as determined by the LAL method.
Storage	Store at < -20°C, stable for 6 months. Please minimize freeze-thaw cycles.
Shipping	This product is provided as liquid. It is shipped at frozen temperature with blue ice/gel packs. Upon receipt, store it immediately at < - 20°C.
Formulation	Supplied as a 0.2 µm filtered solution of 10mM HEPES, pH 7.4.
Reconstitution	Not Applicable

Data



> 95 % as determined by reducing SDS-PAGE.

Background

Ezrin is expressed in cerebral cortex, basal ganglia, hippocampus, hypophysis, and optic nerve. The N-terminus of ezrin contains a FERM domain which is further subdivided into three subdomains. The C-terminus contain a ERM domain. As a member of the ERM protein family, Ezrin serves as an intermediate between the plasma membrane and the actin cytoskeleton. It plays a key role in cell surface structure adhesion, migration, and organization. Ezrin probably involved in connections of major cytoskeletal structures to the plasma membrane. The N-terminal FERM domain strongly binds sodium-hydrogen exchanger regulatory factor (NHERF) proteins (involving long-range allostery). The C-terminal binds to actin, phosphatidylinositol bis-phosphate (PIP2) and membrane proteins like CD44 and ICAM-2. In epithelial cells, Ezrin is required for the formation of microvilli and membrane ruffles on the apical pole. Along with PLEKHG6, Ezrin is required for normal macropinocytosis.

For Research Use Only

A Reliable Research Partner in Life Science and Medicine

Toll-free: 1-888-852-8623

Web: www.elabscience.com

Tel: 1-832-243-6086

Email: techsupport@elabscience.com

Fax: 1-832-243-6017