

Recombinant Human EphA7/EHK3 Protein (His Tag)

Catalog Number:PKSH033689



Note: Centrifuge before opening to ensure complete recovery of vial contents.

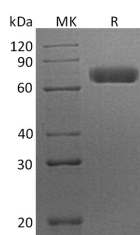
Description

Synonyms	Ephrin Type-A Receptor 7;EPH Homology Kinase 3;EHK-3;EPH-Like Kinase 11;EK11;hEK11;EPA7;EHK3;HEK11
Species	Human
Expression Host	HEK293 Cells
Sequence	Gln28-Ile556
Accession	Q15375
Calculated Molecular Weight	60.2 kDa
Observed molecular weight	72 kDa
Tag	C-His

Properties

Purity	> 95 % as determined by reducing SDS-PAGE.
Endotoxin	< 1.0 EU per µg of the protein as determined by the LAL method.
Storage	Generally, lyophilized proteins are stable for up to 12 months when stored at -20 to -80°C. Reconstituted protein solution can be stored at 4-8°C for 2-7 days. Aliquots of reconstituted samples are stable at < -20°C for 3 months.
Shipping	This product is provided as lyophilized powder which is shipped with ice packs.
Formulation	Lyophilized from a 0.2 µm filtered solution of 20mM PB, 150mM NaCl, pH 7.4. Normally 5 % - 8 % trehalose, mannitol and 0.01% Tween80 are added as protectants before lyophilization. Please refer to the specific buffer information in the printed man
Reconstitution	Please refer to the printed manual for detailed information.

Data



> 95 % as determined by reducing SDS-PAGE.

Background

Ephrin Type-A Receptor 7 (EPA7) is a single-pass type I membrane protein which belongs to the Eph family of transmembrane receptor tyrosine kinases. It contains two fibronectin type-III domains, one protein kinase domain and one SAM (sterile alpha motif) domain. EPA7 is a receptor for members of the ephrin-A family. Eph receptors are largely expressed throughout the ectoderm, mesoderm, and endoderm of vertebrate embryos. EPA7 functions as a repulsive guidance molecule during the targeting of retinal axons to the superior colliculus and of neocortical axons to the thalamus. EPA7 is expressed at a substantial level in most human lung cancers. The high expression of EPA7 protein may participate in the malignancy transformation, invasion progression and metastasis of primary hepatocellular carcinoma.

For Research Use Only

A Reliable Research Partner in Life Science and Medicine

Toll-free: 1-888-852-8623

Web: www.elabscience.com

Tel: 1-832-243-6086

Email: techsupport@elabscience.com

Fax: 1-832-243-6017

Recombinant Human EphA7/EHK3 Protein (His Tag)

Catalog Number:PKSH033689



EPHA7 may involve in smoking related lung carcinogenesis.

For Research Use Only

A Reliable Research Partner in Life Science and Medicine

Toll-free: 1-888-852-8623

Web: www.elabscience.com

Tel: 1-832-243-6086

Email: techsupport@elabscience.com

Fax: 1-832-243-6017