

Recombinant Human DPP4/DPPIV/CD26 Protein (Fc Tag)



Catalog Number:PKSH033696

Note: Centrifuge before opening to ensure complete recovery of vial contents.

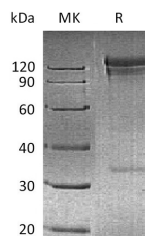
Description

Synonyms	Dipeptidyl peptidase 4;ADABP;Adenosine deaminase complexing protein 2;ADCP-2;Dipeptidyl peptidase IV;DPP IV;T-cell activation antigen CD26
Species	Human
Expression Host	HEK293 Cells
Sequence	Asn29-Pro766
Accession	P27487
Calculated Molecular Weight	111.7 kDa
Observed molecular weight	105-130 kDa
Tag	N-Fc

Properties

Purity	> 95 % as determined by reducing SDS-PAGE.
Endotoxin	< 1.0 EU per µg of the protein as determined by the LAL method.
Storage	Store at < -20°C, stable for 6 months. Please minimize freeze-thaw cycles.
Shipping	This product is provided as liquid. It is shipped at frozen temperature with blue ice/gel packs. Upon receipt, store it immediately at < - 20°C.
Formulation	Supplied as a 0.2 µm filtered solution of PBS, pH7.4.
Reconstitution	Not Applicable

Data



> 95 % as determined by reducing SDS-PAGE.

Background

CD26 is a signal-anchor for type II membrane protein that belongs to the peptidase S9B family. CD26 is expressed specifically in lymphatic vessels but not in blood vessels in the skin; small intestine; esophagus; ovary; breast and prostate glands. It acts as a positive regulator of T-cell coactivation; by binding at least ADA; CAV1; IGF2R; and PTPRC. It's binding to CAV1 and CARD11 induces T-cell proliferation and NF-kappa-B activation in a T-cell receptor/CD3-dependent manner. Its interaction with ADA also regulates lymphocyte-epithelial cell adhesion. In association with FAP is involved in the pericellular proteolysis of the extracellular matrix (ECM); the migration and invasion of endothelial cells into the ECM. It may be involved in the promotion of lymphatic endothelial cells adhesion; migration and tube formation. When overexpressed; it enhanced cell proliferation; a process inhibited by GPC3. It acts also as a serine exopeptidase with a dipeptidyl peptidase activity that regulates various physiological processes by cleaving peptides in the circulation; including many chemokines; mitogenic growth factors; neuropeptides and peptide hormones.

For Research Use Only

A Reliable Research Partner in Life Science and Medicine

Toll-free: 1-888-852-8623

Web: www.elabscience.com

Tel: 1-832-243-6086

Email: techsupport@elabscience.com

Fax: 1-832-243-6017