

Recombinant Human Creatine Kinase BB/CKB Protein (His Tag)



Catalog Number:PKSH033708

Note: Centrifuge before opening to ensure complete recovery of vial contents.

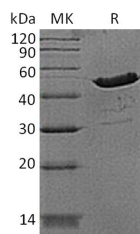
Description

Synonyms	B-CK;CKB;Creatine Kinase BB
Species	Human
Expression Host	E.coli
Sequence	Met1-Lys381
Accession	P12277
Calculated Molecular Weight	44.8 kDa
Observed molecular weight	50 kDa
Tag	N-His

Properties

Purity	> 90 % as determined by reducing SDS-PAGE.
Endotoxin	< 1.0 EU per µg of the protein as determined by the LAL method.
Storage	Store at < -20°C, stable for 6 months. Please minimize freeze-thaw cycles.
Shipping	This product is provided as liquid. It is shipped at frozen temperature with blue ice/gel packs. Upon receipt, store it immediately at < - 20°C.
Formulation	Supplied as a 0.2 µm filtered solution of 20mM Tris-HCl, 150mM NaCl, 10% Glycerol, pH 7.5.
Reconstitution	Not Applicable

Data



> 90 % as determined by reducing SDS-PAGE.

Background

Creatine kinase B-type (CKB) belongs to the ATP:guanido phosphotransferase family. It has dimer of identical or non-identical chains with MM being the major form in skeletal muscle and myocardium. MB exists in myocardium, and BB exists in many tissues, especially brain. CKB reversibly catalyzes the transfer of phosphate between ATP and various phosphogens (e.g. creatine phosphate). Creatine kinase isoenzymes play a central role in energy transduction in tissues with large, fluctuating energy demands, such as skeletal muscle, heart, brain and spermatozoa. Clinically, creatine kinase is assayed in blood tests as a marker of myocardial infarction (heart attack), rhabdomyolysis (severe muscle breakdown), muscular dystrophy, autoimmune myositides and acute renal failure.

For Research Use Only

A Reliable Research Partner in Life Science and Medicine

Toll-free: 1-888-852-8623

Web: www.elabscience.com

Tel: 1-832-243-6086

Email: techsupport@elabscience.com

Fax: 1-832-243-6017