

Recombinant Human CHI3L1/YKL40 Protein (His Tag)

Catalog No. PKSH033717

Note: Centrifuge before opening to ensure complete recovery of vial contents.

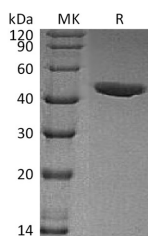
Description

Synonyms	Chitinase-3-Like protein 1;39 kDa Synovial Protein;Cartilage Glycoprotein 39;CGP-39;GP-39;hCGP-39;YKL-40;CHI3L1;ASRT7;DKFZp686N19119;FLJ38139;GP39;HC-gp39;HCGP-3P;YKL40;YYL-40
Species	Human
Expression Host	HEK293 Cells
Sequence	Tyr22-Thr383
Accession	P36222
Calculated Molecular Weight	41.5 kDa
Observed molecular weight	46 kDa
Tag	C-His
Bioactivity	Not validated for activity

Properties

Purity	> 95 % as determined by reducing SDS-PAGE.
Endotoxin	< 1.0 EU per µg of the protein as determined by the LAL method.
Storage	Generally, lyophilized proteins are stable for up to 12 months when stored at -20 to -80°C. Reconstituted protein solution can be stored at 4-8°C for 2-7 days. Aliquots of reconstituted samples are stable at < -20°C for 3 months.
Shipping	This product is provided as lyophilized powder which is shipped with ice packs.
Formulation	Lyophilized from a 0.2 µm filtered solution of 20mM Tris-HCl, 300mM NaCl, 2mM EDTA, pH8.5. Normally 5% - 8% trehalose, mannitol and 0.01% Tween 80 are added as protectants before lyophilization. Please refer to the specific buffer information in the printed manual.
Reconstitution	Please refer to the printed manual for detailed information.

Data



> 95 % as determined by reducing SDS-PAGE.

For Research Use Only

Background

Chitinase-3-Like Protein 1 (CHI3L1) belongs to the glycosyl hydrolase 18 family. CHI3L1 is expressed in activated macrophages, articular chondrocytes, synovial cells as well as in liver. It lacks chitinase activity and is secreted by activated macrophages, chondrocytes, neutrophils and synovial cells. CHI3L1 is thought to play a role in defense against pathogens, or in tissue remodeling, and in the capacity of cells to respond to and cope with changes in their environment. In addition, CHI3L1 is associated with susceptibility to asthma-related traits type 7 (ASRT7) which assessed by methacholine challenge test, serum IgE levels, atopy, and atopic dermatitis.

For Research Use Only