

Recombinant Human E-Cadherin/CDH1 Protein (His Tag)

Catalog No. PKSH033721

Note: Centrifuge before opening to ensure complete recovery of vial contents.

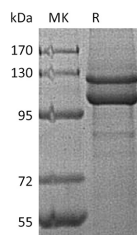
Description

Synonyms	Cadherin-1;CDH1;CAM 120/80;E-cadherin;CD324;CDHE;E-cad;E-Cadherin;ECAD;LCAM;UVO;Arc-1
Species	Human
Expression Host	HEK293 Cells
Sequence	Gln23-Phe647
Accession	A5D8W4
Calculated Molecular Weight	70.0 kDa
Observed molecular weight	70&85 kDa
Tag	C-His
Bioactivity	Not validated for activity

Properties

Purity	> 95 % as determined by reducing SDS-PAGE.
Endotoxin	< 1.0 EU per µg of the protein as determined by the LAL method.
Storage	Generally, lyophilized proteins are stable for up to 12 months when stored at -20 to -80°C. Reconstituted protein solution can be stored at 4-8°C for 2-7 days. Aliquots of reconstituted samples are stable at < -20°C for 3 months.
Shipping	This product is provided as lyophilized powder which is shipped with ice packs.
Formulation	Lyophilized from a 0.2 µm filtered solution of PBS, pH 7.4. Normally 5 % - 8 % trehalose, mannitol and 0.01% Tween80 are added as protectants before lyophilization. Please refer to the specific buffer information in the printed manual.
Reconstitution	Please refer to the printed manual for detailed information.

Data



> 95 % as determined by reducing SDS-PAGE.

Background

Cdh1 is one of the substrate adaptor protein of the anaphase-promoting complex (APC) in the budding yeast

For Research Use Only

Saccharomyces cerevisiae. Functioning as an activator of the APC/C, Cdh1 regulates the activity and substrate specificity of this ubiquitin E3-ligase.