

## Recombinant Human CCL28 Protein

**Catalog No.** PKSH033732

**Note:** Centrifuge before opening to ensure complete recovery of vial contents.

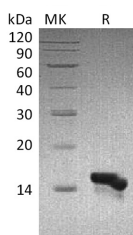
### Description

<b>Synonyms</b>	C-C Motif Chemokine 28;Mucosae-Associated Epithelial Chemokine;MEC;Protein CCK1;Small-Inducible Cytokine A28;CCL28;SCYA28
<b>Species</b>	Human
<b>Expression Host</b>	E.coli
<b>Sequence</b>	Ile20-Tyr127
<b>Accession</b>	Q9NRJ3
<b>Calculated Molecular Weight</b>	12.5 kDa
<b>Observed molecular weight</b>	15 kDa
<b>Tag</b>	None
<b>Bioactivity</b>	Not validated for activity

### Properties

<b>Purity</b>	> 95 % as determined by reducing SDS-PAGE.
<b>Endotoxin</b>	< 1.0 EU per µg of the protein as determined by the LAL method.
<b>Storage</b>	Generally, lyophilized proteins are stable for up to 12 months when stored at -20 to -80°C. Reconstituted protein solution can be stored at 4-8°C for 2-7 days. Aliquots of reconstituted samples are stable at < -20°C for 3 months.
<b>Shipping</b>	This product is provided as lyophilized powder which is shipped with ice packs.
<b>Formulation</b>	Lyophilized from a 0.2 µm filtered solution of PBS, pH 7.4. Normally 5 % - 8 % trehalose, mannitol and 0.01% Tween80 are added as protectants before lyophilization. Please refer to the specific buffer information in the printed manual.
<b>Reconstitution</b>	Please refer to the printed manual for detailed information.

### Data



> 95 % as determined by reducing SDS-PAGE.

### Background

Chemokine (C-C Motif) Ligand 28 (CCL28) is a novel chemokine that shares the most homology with CCL27/CTACK.

### For Research Use Only

CCL28 shows chemotactic activity for resting CD4, CD8 T-cells and eosinophils. It Binds to CCR3 and CCR10 and induces calcium mobilization in a dose-dependent manner. CCR10 (GPR2 orphan receptor) is also the receptor for CCL27/CTACK. CCL28 is preferentially expressed by epithelial cells of diverse tissues, with highest expression level in normal and pathological colon. It is also expressed in normal and asthmatic lung tissues. Human and mouse CCL28 shares 83% sequence identity in their mature regions.

---

## For Research Use Only

Toll-free: 1-888-852-8623  
Web: [www.elabscience.com](http://www.elabscience.com)

Tel: 1-832-243-6086  
Email: [techsupport@elabscience.com](mailto:techsupport@elabscience.com)

Fax: 1-832-243-6017