

Recombinant Human CCL28 Protein

Catalog No. PKSH033732

Note: Centrifuge before opening to ensure complete recovery of vial contents.

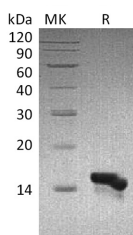
Description

Synonyms	C-C Motif Chemokine 28;Mucosae-Associated Epithelial Chemokine;MEC;Protein CCK1;Small-Inducible Cytokine A28;CCL28;SCYA28
Species	Human
Expression Host	E.coli
Sequence	Ile20-Tyr127
Accession	Q9NRJ3
Calculated Molecular Weight	12.5 kDa
Observed molecular weight	15 kDa
Tag	None
Bioactivity	Not validated for activity

Properties

Purity	> 95 % as determined by reducing SDS-PAGE.
Endotoxin	< 1.0 EU per µg of the protein as determined by the LAL method.
Storage	Generally, lyophilized proteins are stable for up to 12 months when stored at -20 to -80°C. Reconstituted protein solution can be stored at 4-8°C for 2-7 days. Aliquots of reconstituted samples are stable at < -20°C for 3 months.
Shipping	This product is provided as lyophilized powder which is shipped with ice packs.
Formulation	Lyophilized from a 0.2 µm filtered solution of PBS, pH 7.4. Normally 5 % - 8 % trehalose, mannitol and 0.01% Tween80 are added as protectants before lyophilization. Please refer to the specific buffer information in the printed manual.
Reconstitution	Please refer to the printed manual for detailed information.

Data



> 95 % as determined by reducing SDS-PAGE.

Background

Chemokine (C-C Motif) Ligand 28 (CCL28) is a novel chemokine that shares the most homology with CCL27/CTACK.

For Research Use Only

CCL28 shows chemotactic activity for resting CD4, CD8 T-cells and eosinophils. It Binds to CCR3 and CCR10 and induces calcium mobilization in a dose-dependent manner. CCR10 (GPR2 orphan receptor) is also the receptor for CCL27/CTACK. CCL28 is preferentially expressed by epithelial cells of diverse tissues, with highest expression level in normal and pathological colon. It is also expressed in normal and asthmatic lung tissues. Human and mouse CCL28 shares 83% sequence identity in their mature regions.