

## Recombinant Human CCL23 Protein

**Catalog No.** PKSH033734

**Note:** Centrifuge before opening to ensure complete recovery of vial contents.

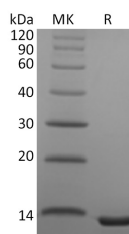
### Description

<b>Synonyms</b>	C-C Motif Chemokine 23;CK-Beta-8;CKB-8;Macrophage Inflammatory Protein 3;MIP-3;Myeloid Progenitor Inhibitory Factor 1;MPIF-1;Small-Inducible Cytokine A23;CCL23;MIP3;MPIF1;SCYA23
<b>Species</b>	Human
<b>Expression Host</b>	E.coli
<b>Sequence</b>	Arg46-Asn120
<b>Accession</b>	P55773
<b>Calculated Molecular Weight</b>	8.7 kDa
<b>Observed molecular weight</b>	11 kDa
<b>Tag</b>	None
<b>Bioactivity</b>	Not validated for activity

### Properties

<b>Purity</b>	> 95 % as determined by reducing SDS-PAGE.
<b>Endotoxin</b>	< 1.0 EU per µg of the protein as determined by the LAL method.
<b>Storage</b>	Generally, lyophilized proteins are stable for up to 12 months when stored at -20 to -80°C. Reconstituted protein solution can be stored at 4-8°C for 2-7 days. Aliquots of reconstituted samples are stable at < -20°C for 3 months.
<b>Shipping</b>	This product is provided as lyophilized powder which is shipped with ice packs.
<b>Formulation</b>	Lyophilized from a 0.2 µm filtered solution of 20mM PB, 250mM NaCl, pH 7.2. Normally 5% - 8% trehalose, mannitol and 0.01% Tween 80 are added as protectants before lyophilization. Please refer to the specific buffer information in the printed manual.
<b>Reconstitution</b>	Please refer to the printed manual for detailed information.

### Data



> 95 % as determined by reducing SDS-PAGE.

### Background

#### For Research Use Only

Human Chemokine (C-C Motif) Ligand 23 (CCL23) is a small cytokine belonging to the CC chemokine family. CCL23 is also known as myeloid progenitor inhibitory factor MPIF-1, CK8 and SCYA23. CCL23 cDNA encodes a 120 amino acid residue precursor protein with a putative 21 amino acid residue signal peptide that is cleaved to generate a 99 amino acid residue mature CCL23 (amino acids 22 -120). Additional N-terminal Processing of the 99 amino acid residue variant can generate a 75 amino acid residue peptide (amino acid 46-120) that is significantly more active than the 99 amino acid residue variant. CCL23 binds to CCR1 with high affinity and has chemotactic activity for monocytes, dendritic cells, and osteoclast precursors. CCL23 enhances angiogenesis of endothelial cells, but reduces the proliferation of progenitor cells giving rise to granulocyte and monocyte lineages.