

# Recombinant Human Cathepsin S/CTSS Protein (His Tag)

Catalog Number:PKSH033736



**Note:** Centrifuge before opening to ensure complete recovery of vial contents.

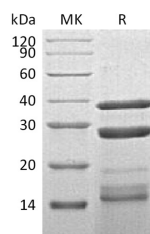
## Description

<b>Synonyms</b>	Cathepsin S;CTSS;CTSS;MGC3886
<b>Species</b>	Human
<b>Expression Host</b>	HEK293 Cells
<b>Sequence</b>	Gln17-Ile331
<b>Accession</b>	AAH02642.1
<b>Calculated Molecular Weight</b>	36.9&25&11.2 kDa
<b>Observed molecular weight</b>	37-40&26-28&14-16 kDa
<b>Tag</b>	C-His

## Properties

<b>Purity</b>	> 90 % as determined by reducing SDS-PAGE.
<b>Endotoxin</b>	< 1.0 EU per µg of the protein as determined by the LAL method.
<b>Storage</b>	Store at < -20°C, stable for 6 months. Please minimize freeze-thaw cycles.
<b>Shipping</b>	This product is provided as liquid. It is shipped at frozen temperature with blue ice/gel packs. Upon receipt, store it immediately at < - 20°C.
<b>Formulation</b>	Supplied as a 0.2 µm filtered solution of 20mM MES, 150mM NaCl, 10% Glycerol, pH 5.5.
<b>Reconstitution</b>	Not Applicable

## Data



> 90 % as determined by reducing SDS-PAGE.

## Background

Cathepsin S is a lysosomal enzyme that belongs to the papain family of cysteine proteases. This protein is expressed by antigen presenting cells including macrophages, B-lymphocytes, dendritic cells and microglia. Moreover, cathepsin S is expressed in some epithelial cells. Compared with the abundant cathepsins B, LandH, cathepsin S shows a restricted tissue distribution, with highest levels in spleen, heart, and lung. In addition, evidences indicated that cathepsin S generates A beta from amyloidogenic fragments of beta APP in the endosomal/lysosomal compartment, and is implicated in the pathogenesis of Alzheimer's disease(AD) and Down Syndrome (DS).

## For Research Use Only

A Reliable Research Partner in Life Science and Medicine

Toll-free: 1-888-852-8623

Web: [www.elabscience.com](http://www.elabscience.com)

Tel: 1-832-243-6086

Email: [techsupport@elabscience.com](mailto:techsupport@elabscience.com)

Fax: 1-832-243-6017