

Recombinant Human CEACAM1/CD66a Protein (His Tag)



Catalog Number:PKSH033739

Note: Centrifuge before opening to ensure complete recovery of vial contents.

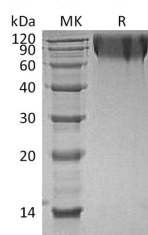
Description

Synonyms	Carcinoembryonic Antigen-Related Cell Adhesion Molecule 1;Biliary Glycoprotein 1;BGP-1;CD66a;CEACAM1;BGP;BGP1
Species	Human
Expression Host	HEK293 Cells
Sequence	Gln35-Gly428
Accession	P13688
Calculated Molecular Weight	44.3 kDa
Observed molecular weight	60-90 kDa
Tag	C-His

Properties

Purity	> 95 % as determined by reducing SDS-PAGE.
Endotoxin	< 1.0 EU per µg of the protein as determined by the LAL method.
Storage	Generally, lyophilized proteins are stable for up to 12 months when stored at -20 to -80°C. Reconstituted protein solution can be stored at 4-8°C for 2-7 days. Aliquots of reconstituted samples are stable at < -20°C for 3 months.
Shipping	This product is provided as lyophilized powder which is shipped with ice packs.
Formulation	Lyophilized from a 0.2 µm filtered solution of 20mM PB, 150mM NaCl, pH 7.2. Normally 5 % - 8 % trehalose, mannitol and 0.01% Tween80 are added as protectants before lyophilization. Please refer to the specific buffer information in the printed man
Reconstitution	Please refer to the printed manual for detailed information.

Data



> 95 % as determined by reducing SDS-PAGE.

Background

Carcinoembryonic Antigen-Related Cell Adhesion Molecule 1 (CEACAM1) is a member of the Carcinoembryonic Antigen (CEA) family, which belongs to the immunoglobulin superfamily. CEACAM1 is originally described in bile ducts of liver as biliary glycoprotein. Subsequently, it is found to be a cell-cell adhesion molecule detected on leukocytes, epithelia, and endothelia. CEACAM1 mediates cell adhesion via homophilic as well as heterophilic binding to other proteins of the subgroup. In addition, CEACAM1 plays a important role in the differentiation and arrangement of tissue three-dimensional structure, angiogenesis, apoptosis, tumor suppression, metastasis, and the modulation of innate and adaptive immune responses.

For Research Use Only

A Reliable Research Partner in Life Science and Medicine

Toll-free: 1-888-852-8623

Web: www.elabscience.com

Tel: 1-832-243-6086

Email: techsupport@elabscience.com

Fax: 1-832-243-6017