

Recombinant Human BTN2A1 Protein (His Tag)

Catalog Number:PKSH033746



Note: Centrifuge before opening to ensure complete recovery of vial contents.

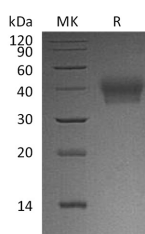
Description

Synonyms	Butyrophilin subfamily 2 member A1;BTN2A1;BT2.1;BTF1
Species	Human
Expression Host	HEK293 Cells
Sequence	Gln29-Ala248
Accession	Q7KYR7
Calculated Molecular Weight	25.4 kDa
Observed molecular weight	39-44 kDa
Tag	C-His

Properties

Purity	> 95 % as determined by reducing SDS-PAGE.
Endotoxin	< 1.0 EU per µg of the protein as determined by the LAL method.
Storage	Generally, lyophilized proteins are stable for up to 12 months when stored at -20 to -80°C. Reconstituted protein solution can be stored at 4-8°C for 2-7 days. Aliquots of reconstituted samples are stable at < -20°C for 3 months.
Shipping	This product is provided as lyophilized powder which is shipped with ice packs.
Formulation	Lyophilized from a 0.2 µm filtered solution of PBS, pH 7.4. Normally 5 % - 8 % trehalose, mannitol and 0.01% Tween80 are added as protectants before lyophilization. Please refer to the specific buffer information in the printed manual.
Reconstitution	Please refer to the printed manual for detailed information.

Data



> 95 % as determined by reducing SDS-PAGE.

Background

Butyrophilin 2A1 (BTN2A1) is an approximately widely expressed and variably glycosylated type I transmembrane glycoprotein. Mature human Butyrophilin 2A1 consists of a 220 amino acid (aa) extracellular domain with two immunoglobulin-like domains, a 21 aa transmembrane segment, and a 258 aa cytoplasmic domain. Alternative splicing generates additional isoforms of human Butyrophilin 2A1 that lack the first Ig like domain or transmembrane segment as well as isoforms with substitutions and deletions in the cytoplasmic region. BTN2A1 is widely expressed including on colonic epithelial cells, on immune cells, and in milk fat globules. It binds to the C-type lectin DCSIGN on monocytederived dendritic cells, and this interaction can be blocked by soluble gp130 from HIV. The polymorphism of BTN2A1 has been associated with metabolic syndrome, type II diabetes mellitus, chronic kidney disease, and

For Research Use Only

A Reliable Research Partner in Life Science and Medicine

Toll-free: 1-888-852-8623

Web: www.elabscience.com

Tel: 1-832-243-6086

Email: techsupport@elabscience.com

Fax: 1-832-243-6017

Recombinant Human BTN2A1 Protein (His Tag)

Catalog Number:PKSH033746



hypertension.

For Research Use Only

A Reliable Research Partner in Life Science and Medicine

Toll-free: 1-888-852-8623

Tel: 1-832-243-6086

Fax: 1-832-243-6017

Web: www.elabscience.com

Email: techsupport@elabscience.com