

Recombinant Human BCL2L1/Bcl-XL Protein (His Tag)

Catalog Number:PKSH033757



Note: Centrifuge before opening to ensure complete recovery of vial contents.

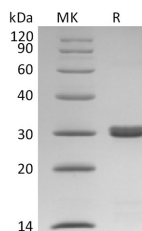
Description

Synonyms	Bcl-2-Like Protein 1;Bcl2-L-1;Apoptosis Regulator Bcl-X;Bcl-X;bcl-xL;BCL-XL/S;bcl-xS;BCL2L;BCLX;BCLXL;BCLXS;PPP1R52
Species	Human
Expression Host	E.coli
Sequence	Met1-Arg212
Accession	Q07817
Calculated Molecular Weight	24.9 kDa
Observed molecular weight	29 kDa
Tag	C-His

Properties

Purity	> 95 % as determined by reducing SDS-PAGE.
Endotoxin	< 1.0 EU per µg of the protein as determined by the LAL method.
Storage	Store at < -20°C, stable for 6 months. Please minimize freeze-thaw cycles.
Shipping	This product is provided as liquid. It is shipped at frozen temperature with blue ice/gel packs. Upon receipt, store it immediately at < - 20°C.
Formulation	Supplied as a 0.2 µm filtered solution of 20mM HEPES, 50mM KCl, 20% Glycerol, pH 7.5.
Reconstitution	Not Applicable

Data



> 95 % as determined by reducing SDS-PAGE.

Background

Bcl-2-Like Protein 1 (BCL2L1) is a member of the Bcl-2 family. BCL2L1 is expressed at high levels in cells that undergo a high rate of turnover, such as developing lymphocytes. BCL2L1 is a mitochondrial membrane protein. BCL2L1 contains four motifs, BH1, BH2 and BH4. The BH4 motif is required for anti-apoptotic activity. The BH1 and BH2 motifs are required for both heterodimerization with other Bcl-2 family members and for repression of cell death. BCL2L1 regulates cell death by blocking the voltage-dependent anion channel (VDAC) and preventing the release of the caspase activator, CYC1, from the mitochondrial membrane. In addition, BCL2L1 promotes apoptosis.

For Research Use Only

A Reliable Research Partner in Life Science and Medicine

Toll-free: 1-888-852-8623

Web: www.elabscience.com

Tel: 1-832-243-6086

Email: techsupport@elabscience.com

Fax: 1-832-243-6017