

Recombinant Human APOM Protein (His Tag)

Catalog No. PKSH033762

Note: Centrifuge before opening to ensure complete recovery of vial contents.

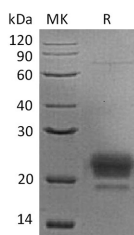
Description

Synonyms	Apolipoprotein M;Apo-M;ApoM;Protein G3a;APOM;G3A;NG20
Species	Human
Expression Host	HEK293 Cells
Sequence	Met1-Asn188
Accession	O95445
Calculated Molecular Weight	22.3 kDa
Observed molecular weight	26 kDa
Tag	C-His
Bioactivity	Not validated for activity

Properties

Purity	> 90 % as determined by reducing SDS-PAGE.
Endotoxin	< 1.0 EU per µg of the protein as determined by the LAL method.
Storage	Generally, lyophilized proteins are stable for up to 12 months when stored at -20 to -80°C. Reconstituted protein solution can be stored at 4-8°C for 2-7 days. Aliquots of reconstituted samples are stable at < -20°C for 3 months.
Shipping	This product is provided as lyophilized powder which is shipped with ice packs.
Formulation	Lyophilized from a 0.2 µm filtered solution of 20mM PB, 150mM NaCl, pH 7.4. Normally 5% - 8% trehalose, mannitol and 0.01% Tween 80 are added as protectants before lyophilization. Please refer to the specific buffer information in the printed manual.
Reconstitution	Please refer to the printed manual for detailed information.

Data



> 90 % as determined by reducing SDS-PAGE.

Background

Apolipoprotein M is a secreted protein which belongs to the Lipocalin family. ApoM often presents in high density lipoprotein (HDL) and to a lesser extent in triglyceride-rich lipoproteins (TGRLP) and low density lipoproteins (LDL).

For Research Use Only

The ApoM gene encoded protein is expressed in liver and kidney; secreted through the plasma membrane but remains membrane-bound. ApoM probably involved in lipid transport. ApoM can bind sphingosine-1-phosphate; myristic acid; palmitic acid and stearic acid; retinol; all-trans-retinoic acid and 9-cis-retinoic acid. The expression of ApoM could be regulated by platelet activating factor (PAF); Transforming Growth Factors (TGF); Insulin-Like Growth factor (IGF) and Leptin.