

Recombinant Human ALDH1A3 Protein (His Tag)

Catalog Number:PKSH033774



Note: Centrifuge before opening to ensure complete recovery of vial contents.

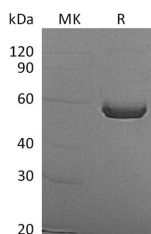
Description

Synonyms	Aldehyde dehydrogenase family 1 member A3;ALDH1A3;Aldehyde dehydrogenase 6;Retinaldehyde dehydrogenase 3;RALDH-3;ALDH6;ALDH1A6;MCOP8;RALDH3
Species	Human
Expression Host	E.coli
Sequence	Met1-Pro512
Accession	P47895
Calculated Molecular Weight	57.5 kDa
Observed molecular weight	55-60 kDa
Tag	N-His

Properties

Purity	> 95 % as determined by reducing SDS-PAGE.
Endotoxin	< 1.0 EU per µg of the protein as determined by the LAL method.
Storage	Store at < -20°C, stable for 6 months. Please minimize freeze-thaw cycles.
Shipping	This product is provided as liquid. It is shipped at frozen temperature with blue ice/gel packs. Upon receipt, store it immediately at < - 20°C.
Formulation	Supplied as a 0.2 µm filtered solution of 20mM Tris-HCl, 150mM NaCl, 20% Glycerol, pH 7.5.
Reconstitution	Not Applicable

Data



> 95 % as determined by reducing SDS-PAGE.

Background

Aldehyde dehydrogenase 1 family member A3 (ALDH1A3), also known as retinaldehyde dehydrogenase 3 (RALDH3), is a member of the aldehyde dehydrogenase family known to metabolize a wide variety of aldehydes. ALDH1A3 specifically oxidizes retinal to retinoic acid (RA) and is differentially expressed in developing embryonic tissues and adult organs. The RA produced by ALDH1A3 in rodents contributes to the development of skin and hair follicles, brain, tooth buds, lungs, olfactory bulbs, kidneys, eyes, skeletal muscle and seminal vesicles. In recent research, ALDH1A3 could be as a marker of cancer stem cell to predict metastasis or clinical prognosis in many cancers.

For Research Use Only

A Reliable Research Partner in Life Science and Medicine

Toll-free: 1-888-852-8623

Web: www.elabscience.com

Tel: 1-832-243-6086

Email: techsupport@elabscience.com

Fax: 1-832-243-6017