

# Recombinant Human CD157/BST1 Protein (Fc Tag)

Catalog Number:PKSH033775



**Note:** Centrifuge before opening to ensure complete recovery of vial contents.

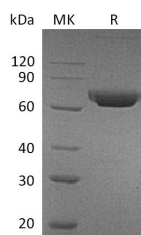
## Description

|                                    |  |
|------------------------------------|--|
| <b>Synonyms</b>                    | ADP-ribosyl cyclase 2;Cyclic ADP-ribose hydrolase 2;BST-1;Bone marrow stromal antigen 1;Bone marrow stromal cell antigen 1 |
| <b>Species</b>                     | Human  |
| <b>Expression Host</b>             | HEK293 Cells   |
| <b>Sequence</b>                    | Gly29-Lys292   |
| <b>Accession</b>                   | Q10588   |
| <b>Calculated Molecular Weight</b> | 57.1 kDa   |
| <b>Observed molecular weight</b>   | 75 kDa   |
| <b>Tag</b>                         | C-Fc   |

## Properties

|                       |  |
|-----------------------|--|
| <b>Purity</b>         | > 95 % as determined by reducing SDS-PAGE.   |
| <b>Endotoxin</b>      | < 1.0 EU per µg of the protein as determined by the LAL method.  |
| <b>Storage</b>        | Generally, lyophilized proteins are stable for up to 12 months when stored at -20 to -80°C. Reconstituted protein solution can be stored at 4-8°C for 2-7 days. Aliquots of reconstituted samples are stable at < -20°C for 3 months.                          |
| <b>Shipping</b>       | This product is provided as lyophilized powder which is shipped with ice packs.  |
| <b>Formulation</b>    | Lyophilized from a 0.2 µm filtered solution of 20mM Tris-HCl, 150mM NaCl, pH 8.0.<br>Normally 5 % - 8 % trehalose, mannitol and 0.01 % Tween80 are added as protectants before lyophilization.<br>Please refer to the specific buffer information in the print |
| <b>Reconstitution</b> | Please refer to the printed manual for detailed information.   |

## Data



> 95 % as determined by reducing SDS-PAGE.

## Background

CD38; also called ADP-ribosyl cyclase; is a Type II integral membrane protein with 301 amino acids in length that belongs to the ADP-ribosyl cyclase family. It synthesizes the second messengers cyclic ADP-ribose and nicotinate-adenine dinucleotide phosphate; the former a second messenger for glucose-induced insulin secretion. And also moonlights as a receptor in cells of the immune system. CD38 is expressed in B and T lymphocytes; osteoclasts; and in cardiac; pancreatic; liver and kidney cells. Through its production of cyclic ADP-ribose; CD38 modulates calcium-mediated signal transduction in many types of cells; including neutrophils and pancreatic beta cells.

## For Research Use Only

A Reliable Research Partner in Life Science and Medicine

Toll-free: 1-888-852-8623

Web: [www.elabscience.com](http://www.elabscience.com)

Tel: 1-832-243-6086

Email: [techsupport@elabscience.com](mailto:techsupport@elabscience.com)

Fax: 1-832-243-6017