

Recombinant Human CD38 Protein (mFc Tag)

Catalog Number:PKSH033777



Note: Centrifuge before opening to ensure complete recovery of vial contents.

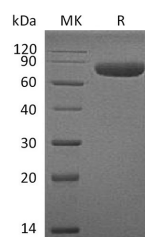
Description

Synonyms	ADP-ribosyl cyclase/cyclic ADP-ribose hydrolase 1;ADP-ribosyl cyclase 1;Cyclic ADP-ribose hydrolase 1;CD38 antigen;CD38 molecule;CD38
Species	Human
Expression Host	HEK293 Cells
Sequence	Val43-Ile300
Accession	P28907
Calculated Molecular Weight	56.5 kDa
Observed molecular weight	70-90 kDa
Tag	C-mFc

Properties

Purity	> 95 % as determined by reducing SDS-PAGE.
Endotoxin	< 1.0 EU per µg of the protein as determined by the LAL method.
Storage	Generally, lyophilized proteins are stable for up to 12 months when stored at -20 to -80°C. Reconstituted protein solution can be stored at 4-8°C for 2-7 days. Aliquots of reconstituted samples are stable at < -20°C for 3 months.
Shipping	This product is provided as lyophilized powder which is shipped with ice packs.
Formulation	Lyophilized from a 0.2 µm filtered solution of PBS, pH 7.4. Normally 5 % - 8 % trehalose, mannitol and 0.01% Tween80 are added as protectants before lyophilization. Please refer to the specific buffer information in the printed manual.
Reconstitution	Please refer to the printed manual for detailed information.

Data



> 95 % as determined by reducing SDS-PAGE.

Background

CD38; also called ADP-ribosyl cyclase; is a Type II integral membrane protein with 301 amino acids in length that belongs to the ADP-ribosyl cyclase family. It synthesizes the second messengers cyclic ADP-ribose and nicotinate-adenine dinucleotide phosphate; the former a second messenger for glucose-induced insulin secretion. And also moonlights as a receptor in cells of the immune system. CD38 is expressed in B and T lymphocytes; osteoclasts; and in cardiac; pancreatic; liver and kidney cells. Through its production of cyclic ADP-ribose; CD38 modulates calcium-mediated signal transduction in many types of cells; including neutrophils and pancreatic beta cells.

For Research Use Only

A Reliable Research Partner in Life Science and Medicine

Toll-free: 1-888-852-8623

Web: www.elabscience.com

Tel: 1-832-243-6086

Email: techsupport@elabscience.com

Fax: 1-832-243-6017