

Recombinant Human CD38 Protein (His Tag)

Catalog Number:PKSH033780



Note: Centrifuge before opening to ensure complete recovery of vial contents.

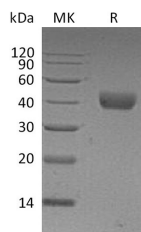
Description

Synonyms	ADP-ribosyl cyclase/cyclic ADP-ribose hydrolase 1;ADP-ribosyl cyclase 1;Cyclic ADP-ribose hydrolase 1;CD38 antigen;CD38 molecule;CD38
Species	Human
Expression Host	HEK293 Cells
Sequence	Val43-Ile300
Accession	P28907
Calculated Molecular Weight	30.7 kDa
Observed molecular weight	38-50 kDa
Tag	C-His

Properties

Purity	> 95 % as determined by reducing SDS-PAGE.
Endotoxin	< 1.0 EU per µg of the protein as determined by the LAL method.
Storage	Store at < -20°C, stable for 6 months. Please minimize freeze-thaw cycles.
Shipping	This product is provided as liquid. It is shipped at frozen temperature with blue ice/gel packs. Upon receipt, store it immediately at < - 20°C.
Formulation	Supplied as a 0.2 µm filtered solution of PBS, pH7.4.
Reconstitution	Not Applicable

Data



> 95 % as determined by reducing SDS-PAGE.

Background

CD38; also known as ADP-ribosyl cyclase/cyclic ADP-ribose hydrolase 1; is a Signal-anchor for type II membrane protein. CD38 is able to transform NAD⁺ to ADP-D-ribose and nicotinamide. It also can transform NADP⁺ to nicotinate-adenine dinucleotide phosphate and nicotinamide. CD38 is expressed at high levels in pancreas; liver; kidney; brain; testis; ovary; placenta; malignant lymphoma and neuroblastoma. Synthesizes the second messengers cyclic ADP-ribose and nicotinate-adenine dinucleotide phosphate; the former a second messenger for glucose-induced insulin secretion. Also has cADPr hydrolase activity. Also moonlights as a receptor in cells of the immune system.

For Research Use Only

A Reliable Research Partner in Life Science and Medicine

Toll-free: 1-888-852-8623

Web: www.elabscience.com

Tel: 1-832-243-6086

Email: techsupport@elabscience.com

Fax: 1-832-243-6017