

Recombinant Human Mesothelin/MSLN Protein (His & Avi Tag)

Catalog No. PKSH033798

Note: Centrifuge before opening to ensure complete recovery of vial contents.

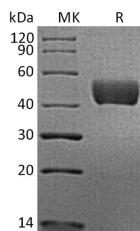
Description

Synonyms	Megakaryocyte potentiating factor;mesothelin;Pre-pro-megakaryocyte-potentiating factor;soluble MPF mesothelin related protein;CAK1;MPF;MSLN;SMR;CAK1;CAK1 antigen
Species	Human
Expression Host	HEK293 Cells
Sequence	Glu296-Ser598
Accession	AAH09272.1
Calculated Molecular Weight	36.7 kDa
Observed molecular weight	38-60 kDa
Tag	C-His-Avi
Bioactivity	Not validated for activity

Properties

Purity	> 95 % as determined by reducing SDS-PAGE.
Endotoxin	< 1.0 EU per µg of the protein as determined by the LAL method.
Storage	Generally, lyophilized proteins are stable for up to 12 months when stored at -20 to -80°C. Reconstituted protein solution can be stored at 4-8°C for 2-7 days. Aliquots of reconstituted samples are stable at < -20°C for 3 months.
Shipping	This product is provided as lyophilized powder which is shipped with ice packs.
Formulation	Lyophilized from a 0.2 µm filtered solution of PBS, pH 7.4. Normally 5 % - 8 % trehalose, mannitol and 0.01% Tween80 are added as protectants before lyophilization. Please refer to the specific buffer information in the printed manual.
Reconstitution	Please refer to the printed manual for detailed information.

Data



> 95 % as determined by reducing SDS-PAGE.

Background

For Research Use Only

Mesothelin is a cell surface glycoprotein whose expression is limited to mesothelial cells of the serosa (pleura, pericardium, and peritoneum) and epithelial cells of the trachea, tonsils, fallopian tube, and kidneys. Mesothelin plays an important role in cell survival, proliferation, migration, invasion, tumor progression, and resistance to chemotherapy. The overexpression of mesothelin can activate NF- κ B and signal transducer and activator of transcription 3 (Stat3), inhibit apoptotic signaling and TNF- α -induced apoptosis, and accelerate the G1–S transition. Mesothelin is also found overexpressed in various cancers, including malignant mesothelioma, pancreatic or ovarian carcinoma, sarcomas and in some gastrointestinal or pulmonary carcinomas. As a result of its limited expression in normal tissues, mesothelin has been reported as an ideal tumor-associated marker for the development of targeted therapy.