

Recombinant Mouse PSGL-1/CD162 Protein (aa 42-307, Fc Tag)



Catalog Number: PKSM041283

Note: Centrifuge before opening to ensure complete recovery of vial contents.

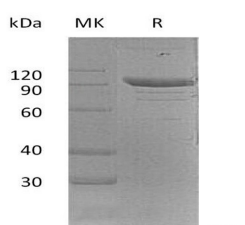
Description

Synonyms	CD162;Psgl-1;Psgl1;Selp1;CLA;PSGL1;PSGL-1
Species	Mouse
Expression Host	HEK293 Cells
Sequence	Gln42-Cys307
Accession	CAA62583.1
Calculated Molecular Weight	54.7 kDa
Observed molecular weight	90 kDa
Tag	C-Fc

Properties

Purity	> 95 % as determined by reducing SDS-PAGE.
Endotoxin	< 1.0 EU per µg of the protein as determined by the LAL method.
Storage	Generally, lyophilized proteins are stable for up to 12 months when stored at -20 to -80°C. Reconstituted protein solution can be stored at 4-8°C for 2-7 days. Aliquots of reconstituted samples are stable at < -20°C for 3 months.
Shipping	This product is provided as lyophilized powder which is shipped with ice packs.
Formulation	Lyophilized from a 0.2 µm filtered solution of 20mM PB, 150mM NaCl, pH7.4. Normally 5 % - 8 % trehalose, mannitol and 0.01% Tween80 are added as protectants before lyophilization. Please refer to the specific buffer information in the printed manual
Reconstitution	Please refer to the printed manual for detailed information.

Data



> 95 % as determined by reducing SDS-PAGE.

Background

P-selectin glycoprotein ligand 1 is the high affinity counter-receptor for P-selectin on expressed on activated endothelial cells and platelets. As such, it plays a critical role in the tethering of these cells to activated platelets or endothelia expressing P-selectin. As cell adhesion molecules, multiple studies have shown that PSGL-1/ P-selectin interaction is required for the normal recruitment of leukocytes during inflammatory reactions, and also participates in hemostatic responses. PSGL-1 can also bind to other two members of the selectin family, E-selectin (endothelial) and L-selectin (leukocyte), but binds best to P-selectin.

For Research Use Only

A Reliable Research Partner in Life Science and Medicine

Toll-free: 1-888-852-8623

Web: www.elabscience.com

Tel: 1-832-243-6086

Email: techsupport@elabscience.com

Fax: 1-832-243-6017