

# Recombinant Mouse LAMP1/CD107a Protein (His Tag)

Catalog Number:PKSM041307



**Note:** Centrifuge before opening to ensure complete recovery of vial contents.

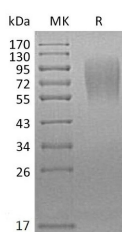
## Description

<b>Synonyms</b>	Lysosome-associated membrane glycoprotein 1;LAMP-1;Lysosome-associated membrane protein 1;120 kDa lysosomal membrane glycoprotein;CD107 antigen-like family member A;LGP-120;Lysosomal membrane glycoprotein A;LGP-A;P2B;CD107a
<b>Species</b>	Mouse
<b>Expression Host</b>	HEK293 Cells
<b>Sequence</b>	Leu25-Asn370
<b>Accession</b>	P11438
<b>Calculated Molecular Weight</b>	38.6 kDa
<b>Observed molecular weight</b>	55-110 kDa
<b>Tag</b>	C-His

## Properties

<b>Purity</b>	> 95 % as determined by reducing SDS-PAGE.
<b>Endotoxin</b>	< 1.0 EU per µg of the protein as determined by the LAL method.
<b>Storage</b>	Generally, lyophilized proteins are stable for up to 12 months when stored at -20 to -80°C. Reconstituted protein solution can be stored at 4-8°C for 2-7 days. Aliquots of reconstituted samples are stable at < -20°C for 3 months.
<b>Shipping</b>	This product is provided as lyophilized powder which is shipped with ice packs.
<b>Formulation</b>	Lyophilized from a 0.2 µm filtered solution of PBS, pH 7.4. Normally 5 % - 8 % trehalose, mannitol and 0.01% Tween80 are added as protectants before lyophilization. Please refer to the specific buffer information in the printed manual.
<b>Reconstitution</b>	Please refer to the printed manual for detailed information.

## Data



> 95 % as determined by reducing SDS-PAGE.

## Background

Lysosomal associated membrane protein 1 (LAMP1) is an approximately 120 kDa transmembrane glycoprotein that is a major protein component of lysosomal membranes. Mature mouse LAMP1 consists of a 346 amino acid (aa) intraluminal domain (ECD), a 24 aa transmembrane segment, and a 12 aa cytoplasmic tail. Its luminal domain is organized into two heavily N-glycosylated regions separated by a Ser/Pro-rich linker that carries a minor amount of O-linked glycosylation. Within the luminal domain, mouse LAMP1 shares approximately 64% and 82% aa sequence identity with human and rat

## For Research Use Only

A Reliable Research Partner in Life Science and Medicine

Toll-free: 1-888-852-8623

Web: [www.elabscience.com](http://www.elabscience.com)

Tel: 1-832-243-6086

Email: [techsupport@elabscience.com](mailto:techsupport@elabscience.com)

Fax: 1-832-243-6017

# Recombinant Mouse LAMP1/CD107a Protein (His Tag)

Catalog Number:PKSM041307



LAMP1, respectively. The sorting of LAMP1 to lysosomes relies on a tyrosine motif in the cytoplasmic tail. In cytotoxic T cells and mast cells, LAMP1 is expressed in the membranes of intracellular granules that contain effector molecules such as perforin, granzymes, eicosanoids, and histamine. A glycoform of LAMP1 known as M150 is expressed on the surface of activated macrophages where it promotes T cell co-stimulation and a Th1 biased immune response. Exposure of epithelial cells to pathogenic Neisseria bacteria induces the redistribution of LAMP1 to the cell surface where it can be cleaved by the Neisseria IgA1 protease.

---

## For Research Use Only

A Reliable Research Partner in Life Science and Medicine

Toll-free: 1-888-852-8623

Tel: 1-832-243-6086

Fax: 1-832-243-6017

Web: [www.elabscience.com](http://www.elabscience.com)

Email: [techsupport@elabscience.com](mailto:techsupport@elabscience.com)