

## Recombinant Mouse L-Selectin/SELL Protein (His Tag)

**Catalog No.** PKSM041308

**Note:** Centrifuge before opening to ensure complete recovery of vial contents.

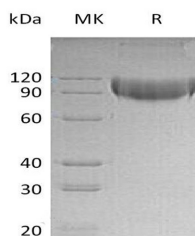
### Description

<b>Synonyms</b>	L-selectin;Sell;CD62 antigen-like family member L;Leukocyte adhesion molecule 1;LECAM1;Lymph node homing receptor;Lymphocyte antigen 22;CD62L;LECAM-1;Lnhr;Ly-22;Ly-m22;Lyam-1;Lyam1
<b>Species</b>	Mouse
<b>Expression Host</b>	HEK293 Cells
<b>Sequence</b>	Trp39-Asn332
<b>Accession</b>	P18337
<b>Calculated Molecular Weight</b>	61 kDa
<b>Observed molecular weight</b>	80-120 kDa
<b>Tag</b>	C-His
<b>Bioactivity</b>	Not validated for activity

### Properties

<b>Purity</b>	> 95 % as determined by reducing SDS-PAGE.
<b>Endotoxin</b>	< 1.0 EU per µg of the protein as determined by the LAL method.
<b>Storage</b>	Generally, lyophilized proteins are stable for up to 12 months when stored at -20 to -80°C. Reconstituted protein solution can be stored at 4-8°C for 2-7 days. Aliquots of reconstituted samples are stable at < -20°C for 3 months.
<b>Shipping</b>	This product is provided as lyophilized powder which is shipped with ice packs.
<b>Formulation</b>	Lyophilized from a 0.2 µm filtered solution of 20mM PB,150mM NaCl,pH7.4. Normally 5% - 8% trehalose, mannitol and 0.01% Tween 80 are added as protectants before lyophilization. Please refer to the specific buffer information in the printed manual.
<b>Reconstitution</b>	Please refer to the printed manual for detailed information.

### Data



> 95 % as determined by reducing SDS-PAGE.

### Background

#### For Research Use Only

L-Selectin is a member of a family of Selectin that is transiently expressed on vascular endothelial cells in response to IL-1 beta and TNF-alpha. L-Selectin (Leukocyte Selectin, LAM-1, LECAM-1, LECCAM-1, TQ1, Leu-8, MEL-14 antigen, DREG, lymph node homing receptor, CD62L) is expressed constitutively on a wide variety of leukocytes and mediates a number of leukocyte-endothelial interactions, including the binding of lymphocytes to HEV of peripheral lymph node high endothelial venules (HEV), neutrophil rolling, and leukocyte attachment to cytokine-treated endothelium in vitro.