

Recombinant Mouse L-Selectin/SELL Protein (His Tag)

Catalog Number:PKSM041308



Note: Centrifuge before opening to ensure complete recovery of vial contents.

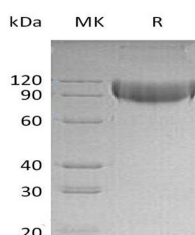
Description

Synonyms	L-selectin;Sell;CD62 antigen-like family member L;Leukocyte adhesion molecule 1;LECAM1;Lymph node homing receptor;Lymphocyte antigen 22;CD62L;LECAM-1;Lnhr;Ly-22;Ly-m22;Lyam-1;Lyam1
Species	Mouse
Expression Host	HEK293 Cells
Sequence	Trp39-Asn332
Accession	P18337
Calculated Molecular Weight	61 kDa
Observed molecular weight	80-120 kDa
Tag	C-His

Properties

Purity	> 95 % as determined by reducing SDS-PAGE.
Endotoxin	< 1.0 EU per µg of the protein as determined by the LAL method.
Storage	Generally, lyophilized proteins are stable for up to 12 months when stored at -20 to -80°C. Reconstituted protein solution can be stored at 4-8°C for 2-7 days. Aliquots of reconstituted samples are stable at < -20°C for 3 months.
Shipping	This product is provided as lyophilized powder which is shipped with ice packs.
Formulation	Lyophilized from a 0.2 µm filtered solution of 20mM PB,150mM NaCl,pH7.4. Normally 5 % - 8 % trehalose, mannitol and 0.01% Tween80 are added as protectants before lyophilization. Please refer to the specific buffer information in the printed manual
Reconstitution	Please refer to the printed manual for detailed information.

Data



> 95 % as determined by reducing SDS-PAGE.

Background

L-Selectin is a member of a family of Selectin that is transiently expressed on vascular endothelial cells in response to IL-1 beta and TNF-alpha. L-Selectin (Leukocyte Selectin, LAM-1, LECAM-1, LECCAM-1, TQ1, Leu-8, MEL-14 antigen, DREG, lymph node homing receptor, CD62L) is expressed constitutively on a wide variety of leukocytes and mediates a number of leukocyte-endothelial interactions, including the binding of lymphocytes to HEV of peripheral lymph node high endothelial venules (HEV), neutrophil rolling, and leukocyte attachment to cytokine-treated endothelium in vitro.

For Research Use Only

A Reliable Research Partner in Life Science and Medicine

Toll-free: 1-888-852-8623

Web: www.elabscience.com

Tel: 1-832-243-6086

Email: techsupport@elabscience.com

Fax: 1-832-243-6017