

Recombinant Mouse SCF/c-Kit Ligand Protein (His Tag)

Catalog Number:PKSM041311



Note: Centrifuge before opening to ensure complete recovery of vial contents.

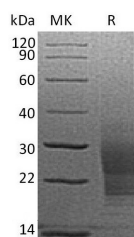
Description

Synonyms	FPH2;KIT ligand;Kitl;KITLG;KL-1;Mast cell growth factor;MGF;MGFSHEP7;SCF;Stem cell factor;SFc-Kit ligand;SLF;steel factor;Hematopoietic growth factor KL
Species	Mouse
Expression Host	HEK293 Cells
Sequence	Lys26-Ala189
Accession	P20826
Calculated Molecular Weight	19.3 kDa
Observed molecular weight	19-35 kDa
Tag	C-His

Properties

Purity	> 95 % as determined by reducing SDS-PAGE.
Endotoxin	< 1.0 EU per µg of the protein as determined by the LAL method.
Storage	Generally, lyophilized proteins are stable for up to 12 months when stored at -20 to -80°C. Reconstituted protein solution can be stored at 4-8°C for 2-7 days. Aliquots of reconstituted samples are stable at < -20°C for 3 months.
Shipping	This product is provided as lyophilized powder which is shipped with ice packs.
Formulation	Lyophilized from a 0.2 µm filtered solution of PBS, pH 7.4. Normally 5 % - 8 % trehalose, mannitol and 0.01% Tween80 are added as protectants before lyophilization. Please refer to the specific buffer information in the printed manual.
Reconstitution	Please refer to the printed manual for detailed information.

Data



> 95 % as determined by reducing SDS-PAGE.

Background

SCF/C-kit ligand is the ligand of the tyrosine-kinase receptor encoded by the KIT locus. Plays an essential role in the regulation of cell survival and proliferation, hematopoiesis, stem cell maintenance, gametogenesis, mast cell development, migration and function, and in melanogenesis. KITLG/SCF binding can activate several signaling pathways. Promotes phosphorylation of PIK3R1, the regulatory subunit of phosphatidylinositol 3-kinase, and subsequent activation of the kinase AKT1. In phase I/II clinical studies administration of the combination of SCF and G-CSF resulted in a two- to threefold increase in cells that express the CD34 antigen compared with G-CSF alone.

For Research Use Only

A Reliable Research Partner in Life Science and Medicine

Toll-free: 1-888-852-8623

Web: www.elabscience.com

Tel: 1-832-243-6086

Email: techsupport@elabscience.com

Fax: 1-832-243-6017