

Recombinant Mouse Lumican/LUM Protein (His Tag)

Catalog No. PKSM041313

Note: Centrifuge before opening to ensure complete recovery of vial contents.

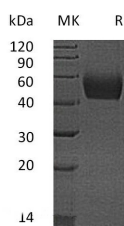
Description

Synonyms	Keratan sulfate proteoglycan lumican;KSPG lumican;Lumican;LDC
Species	Mouse
Expression Host	HEK293 Cells
Sequence	Gln19-Asn338
Accession	P51885
Calculated Molecular Weight	37.4 kDa
Observed molecular weight	40-60 kDa
Tag	C-His
Bioactivity	Not validated for activity

Properties

Purity	> 95 % as determined by reducing SDS-PAGE.
Endotoxin	< 1.0 EU per µg of the protein as determined by the LAL method.
Storage	Generally, lyophilized proteins are stable for up to 12 months when stored at -20 to -80°C. Reconstituted protein solution can be stored at 4-8°C for 2-7 days. Aliquots of reconstituted samples are stable at < -20°C for 3 months.
Shipping	This product is provided as lyophilized powder which is shipped with ice packs.
Formulation	Lyophilized from a 0.2 µm filtered solution of PBS, pH 7.4. Normally 5 % - 8 % trehalose, mannitol and 0.01% Tween80 are added as protectants before lyophilization. Please refer to the specific buffer information in the printed manual.
Reconstitution	Please refer to the printed manual for detailed information.

Data



> 95 % as determined by reducing SDS-PAGE.

Background

Keratan sulfate proteoglycan lumican, mostly known as lumican, belongs to the SLRP class II subfamily and the small leucine-rich proteoglycan (SLRP) family. Lumican binds to laminin. It has positive regulation of transcription from RNA

For Research Use Only

polymerase II promoter and transforming growth factor beta1 production. Lumican is expressed in a variety of tissues, including skin, artery, lung, cornea, kidney, bone, aorta, and articular cartilage. The abnormal connective tissue phenotype seen in the Lumican null mice shows the importance of the role of Lumican in collagen fibrillogenesis. In addition to the control of collagen fibril assembly, Lumican has been shown to play a role in the regulation of cell proliferation, migration, and adhesion.

For Research Use Only

Toll-free: 1-888-852-8623

Web: www.elabscience.com

Tel: 1-832-243-6086

Email: techsupport@elabscience.com

Fax: 1-832-243-6017