

Recombinant Mouse IL-2RG/CD132 Protein (His Tag)

Catalog No. PKSM041317

Note: Centrifuge before opening to ensure complete recovery of vial contents.

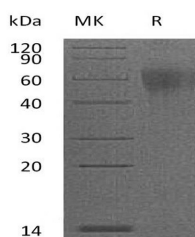
Description

Synonyms	Interleukin 2 receptor;gamma chain;isoform CRA_b;IL2rg;CIDX;IL-2 R γ
Species	Mouse
Expression Host	HEK293 Cells
Sequence	Ser25-Ala263
Accession	Q3UPA9
Calculated Molecular Weight	29 kDa
Observed molecular weight	45-75 kDa
Tag	C-His
Bioactivity	Not validated for activity

Properties

Purity	> 95 % as determined by reducing SDS-PAGE.
Endotoxin	< 1.0 EU per μ g of the protein as determined by the LAL method.
Storage	Generally, lyophilized proteins are stable for up to 12 months when stored at -20 to -80°C. Reconstituted protein solution can be stored at 4-8°C for 2-7 days. Aliquots of reconstituted samples are stable at < -20°C for 3 months.
Shipping	This product is provided as lyophilized powder which is shipped with ice packs.
Formulation	Lyophilized from a 0.2 μ m filtered solution of 20mM Tris-HCl, 150mM NaCl, pH 8.5. Normally 5% - 8% trehalose, mannitol and 0.01% Tween 80 are added as protectants before lyophilization. Please refer to the specific buffer information in the printed manual.
Reconstitution	Please refer to the printed manual for detailed information.

Data



> 95 % as determined by reducing SDS-PAGE.

Background

The Interleukin-2 receptor gamma chain (IL-2 R γ , CD132) of the high affinity functional mouse IL-2 receptor complex is

For Research Use Only

a member the hematopoietin receptor family. It is expressed on most lymphocyte (white blood cell) populations, and its gene is found on the X-chromosome of mammals. Common IL2 receptor- γ Chain is required for IL-2 receptor signaling. Besides IL-2, the Common IL2 receptor- γ chain has been shown to be a component of the functional receptor complexes for IL-4, IL-7, IL-9 and IL-15. It is a component of multiple cytokine receptors that are essential for lymphocyte development and function. Common IL2 receptor- γ Chain is also designated the common gamma chain.