

Recombinant Mouse IL2Ra/CD25 Protein (His Tag)

Catalog No. PKSM041319

Note: Centrifuge before opening to ensure complete recovery of vial contents.

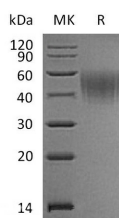
Description

Synonyms	CD25;IL-2 R alpha;IL2RA;CD25 antigen;IDDM10;IL-2 receptor subunit alpha;IL2R;IL-2R subunit alpha;IL-2-RA;IL2-RA;interleukin 2 receptor;alpha;interleukin-2 receptor subunit alpha;p55;TAC antigen;TCGFR;Il2r;Ly-43
Species	Mouse
Expression Host	HEK293 Cells
Sequence	Glu22-Lys236
Accession	P01590
Calculated Molecular Weight	25.5 kDa
Observed molecular weight	40-60 kDa
Tag	C-His
Bioactivity	Not validated for activity

Properties

Purity	> 95 % as determined by reducing SDS-PAGE.
Endotoxin	< 1.0 EU per µg of the protein as determined by the LAL method.
Storage	Generally, lyophilized proteins are stable for up to 12 months when stored at -20 to -80°C. Reconstituted protein solution can be stored at 4-8°C for 2-7 days. Aliquots of reconstituted samples are stable at < -20°C for 3 months.
Shipping	This product is provided as lyophilized powder which is shipped with ice packs.
Formulation	Lyophilized from a 0.2 µm filtered solution of PBS, pH 7.4. Normally 5 % - 8 % trehalose, mannitol and 0.01% Tween80 are added as protectants before lyophilization. Please refer to the specific buffer information in the printed manual.
Reconstitution	Please refer to the printed manual for detailed information.

Data



> 95 % as determined by reducing SDS-PAGE.

For Research Use Only

Background

The interleukin 2 receptor alpha (IL2RA), also called CD25, is a type I transmembrane protein that presents on activated T cells, activated B cells, some thymocytes, myeloid precursors, and oligodendrocytes. IL2RA is a member of cytokine receptors family that utilizes the common gamma chain subunit (γ_c). IL2RA is expressed in most B-cell neoplasms, some acute nonlymphocytic leukemias, neuroblastomas, and tumor infiltrating lymphocytes. IL2RA associates with IL2RB (CD122) to form a heterodimer that can act as a high-affinity receptor for IL-2.

For Research Use Only