

Note: Centrifuge before opening to ensure complete recovery of vial contents.

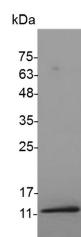
Description

Synonyms	IGF1;IGF-1;insulin-like growth factor 1;Insulin-like growth factor I;Somatomedin C;somatomedin-C
Species	Mouse
Expression Host	E.coli
Sequence	Gly49-Ala118
Accession	P05017
Calculated Molecular Weight	8.6 kDa
Observed molecular weight	11-17 kDa
Tag	C-His

Properties

Purity	> 98 % as determined by reducing SDS-PAGE.
Endotoxin	< 0.1 EU per µg of the protein as determined by the LAL method.
Storage	Generally, lyophilized proteins are stable for up to 12 months when stored at -20 to -80°C. Reconstituted protein solution can be stored at 4-8°C for 2-7 days. Aliquots of reconstituted samples are stable at < -20°C for 3 months.
Shipping	This product is provided as lyophilized powder which is shipped with ice packs.
Formulation	Lyophilized from sterile PBS,pH 8.0. Normally 5 % - 8 % trehalose, mannitol and 0.01 % Tween80 are added as protectants before lyophilization. Please refer to the specific buffer information in the printed manual.
Reconstitution	Please refer to the printed manual for detailed information.

Data



> 98 % as determined by reducing SDS-PAGE.

Background

Insulin-like growth factor I (IGF1) belongs to the family of insulin-like growth factors that are structurally homologous to proinsulin. Mouse IGF-I is synthesized as two precursor isoforms with alternate N- and C-terminal propeptides. These isoforms are differentially expressed by various tissues. Mature mouse IGF-I shares 94% and 99% aa sequence identity with human and rat IGF-I, respectively, and exhibits cross-species activity. It shares 60% aa sequence identity with mature mouse IGF-II. IGF-I induces the proliferation, migration, and differentiation of a wide variety of cell types during development and postnatally. It plays an important role in muscle regeneration and tumor progression. IGF-I binds IGF-I R, IGF-II R, and the insulin receptor. IGF-I association with IGF binding proteins increases its plasma half-life and

For Research Use Only

A Reliable Research Partner in Life Science and Medicine

Toll-free: 1-888-852-8623

Web: www.elabscience.com

Tel: 1-832-243-6086

Email: techsupport@elabscience.com

Fax: 1-832-243-6017

Recombinant Mouse IGF1(Long-R3-IGF1) Protein (His Tag)

Catalog Number:PKSM041325



modulates its interactions with receptors.

For Research Use Only

A Reliable Research Partner in Life Science and Medicine

Toll-free: 1-888-852-8623

Tel: 1-832-243-6086

Fax: 1-832-243-6017

Web: www.elabscience.com

Email: techsupport@elabscience.com