

Recombinant Mouse SerpinE2/SERPINE2 Protein (His Tag)



Catalog Number: PKSM041335

Note: Centrifuge before opening to ensure complete recovery of vial contents.

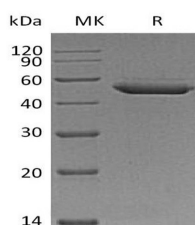
Description

Synonyms	Glia-derived nexin;GDN;Peptidase inhibitor 7;PI-7;Protease nexin 1;PN-1;Protease nexin I;Serine protease-inhibitor 4;Serpin E2;Pi7;Pn1;Spi4
Species	Mouse
Expression Host	HEK293 Cells
Sequence	Ser20-Pro397
Accession	Q07235
Calculated Molecular Weight	43.2 kDa
Observed molecular weight	50-55 kDa
Tag	C-His

Properties

Purity	> 95 % as determined by reducing SDS-PAGE.
Endotoxin	< 1.0 EU per µg of the protein as determined by the LAL method.
Storage	Store at < -20°C, stable for 6 months. Please minimize freeze-thaw cycles.
Shipping	This product is provided as liquid. It is shipped at frozen temperature with blue ice/gel packs. Upon receipt, store it immediately at < - 20°C.
Formulation	Supplied as a 0.2 µm filtered solution of 20mM Sodium Acetate, 150 mM NaCl, 5% Trehalose, 5% Mannitol, 0.02% Tween 80, 1mM EDTA, pH 4.0.
Reconstitution	Not Applicable

Data



> 95 % as determined by reducing SDS-PAGE.

Background

Serpin E2 is a member of the Serpin superfamily of the serine protease inhibitors. Serpin E2 is a potent inhibitor of thrombin, plasmin and plasminogen activators. It is differentially expressed during neuronal differentiation and is able to transform human embryonic kidney cells into neuron-like cells. Its over-expression in mice leads to progressive neuronal and motor dysfunction in these animals. It is also over-expressed in the majority of pancreatic carcinoma as well as gastric and colorectal cancer samples whereas it is weakly expressed in all normal pancreas and chronic pancreatitis tissue samples. It plays an important role in controlling male fertility because its knockout male mice show a marked impairment in fertility from the onset of sexual maturity and its abnormal expression is found in the semen of men with seminal dysfunction.

For Research Use Only

A Reliable Research Partner in Life Science and Medicine

Toll-free: 1-888-852-8623

Web: www.elabscience.com

Tel: 1-832-243-6086

Email: techsupport@elabscience.com

Fax: 1-832-243-6017