

Recombinant Mouse CD38 Protein (Fc Tag)

Catalog No. PKSM041364

Note: Centrifuge before opening to ensure complete recovery of vial contents.

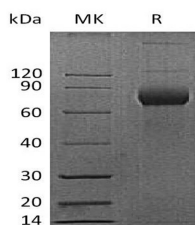
Description

Synonyms	cADPr hydrolase 1;CD38 antigen (p45);CD38 antigen;CD38 molecule;CD38;Cyclic ADP-ribose hydrolase 1;Cyclic ADP-ribose Hydrolase;EC 3.2.2.5;NAD(+) nucleosidase;T10;;ADPRC 1-rs1;ADPRC1;Cd38;Cd38-rs1;I-19
Species	Mouse
Expression Host	HEK293 Cells
Sequence	Leu45-Thr304
Accession	P56528
Calculated Molecular Weight	56.9 kDa
Observed molecular weight	70-90 kDa
Tag	C-Fc
Bioactivity	Not validated for activity

Properties

Purity	> 95 % as determined by reducing SDS-PAGE.
Endotoxin	< 1.0 EU per µg of the protein as determined by the LAL method.
Storage	Generally, lyophilized proteins are stable for up to 12 months when stored at -20 to -80°C. Reconstituted protein solution can be stored at 4-8°C for 2-7 days. Aliquots of reconstituted samples are stable at < -20°C for 3 months.
Shipping	This product is provided as lyophilized powder which is shipped with ice packs.
Formulation	Lyophilized from a 0.2 µm filtered solution of 20mM PB, 150mM NaCl, PH7.0. Normally 5% - 8% trehalose, mannitol and 0.01% Tween 80 are added as protectants before lyophilization. Please refer to the specific buffer information in the printed manual.
Reconstitution	Please refer to the printed manual for detailed information.

Data



> 95 % as determined by reducing SDS-PAGE.

Background

For Research Use Only

CD38, also called ADP-ribosyl cyclase, is a Type II integral membrane protein with 301 amino acids in length that belongs to the ADP-ribosyl cyclase family. It synthesizes the second messengers cyclic ADP-ribose and nicotinate-adenine dinucleotide phosphate, the former a second messenger for glucose-induced insulin secretion. And also moonlights as a receptor in cells of the immune system. CD38 is expressed in B and T lymphocytes, osteoclasts, and in cardiac, pancreatic, liver and kidney cells. Through its production of cyclic ADP-ribose, CD38 modulates calcium-mediated signal transduction in many types of cells, including neutrophils and pancreatic beta cells.