

Recombinant Cynomolgus OX40/TNFRSF4 Protein (His Tag)



Catalog Number:PKSQ050014

Note: Centrifuge before opening to ensure complete recovery of vial contents.

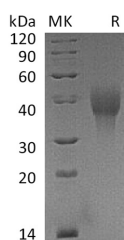
Description

Synonyms	Tyrosine-protein kinase Lyn (LYN);Lck/Yes-related novel protein tyrosine kinase;V-yes-1 Yamaguchi sarcoma viral related oncogene homolog;p53Lyn;p56Lyn and JTK8;
Species	Cynomolgus macaques
Expression Host	HEK293 Cells
Sequence	Lys28-Ala214
Accession	XM_005545122.1
Calculated Molecular Weight	21.3 kDa
Observed molecular weight	35-50 kDa
Tag	C-His

Properties

Purity	> 95 % as determined by reducing SDS-PAGE.
Endotoxin	< 1.0 EU per µg of the protein as determined by the LAL method.
Storage	Generally, lyophilized proteins are stable for up to 12 months when stored at -20 to -80°C. Reconstituted protein solution can be stored at 4-8°C for 2-7 days. Aliquots of reconstituted samples are stable at < -20°C for 3 months.
Shipping	This product is provided as lyophilized powder which is shipped with ice packs.
Formulation	Lyophilized from a 0.2 µm filtered solution of PBS, pH 7.4. Normally 5 % - 8 % trehalose, mannitol and 0.01% Tween80 are added as protectants before lyophilization. Please refer to the specific buffer information in the printed manual.
Reconstitution	Please refer to the printed manual for detailed information.

Data



> 95 % as determined by reducing SDS-PAGE.

Background

LYN contains one protein kinase domain, one SH2 domain, one SH3 domain, and the protein kinase domain plays an important role in its localization in the cell membrane. LYN is also thought to participate in signal transduction from cell surface receptors that lack intrinsic tyrosine kinase activity. In addition, LYN is associated with a number of cell surface receptors including the B cell antigen receptor and immunoglobulin E receptor (FcεRI).

For Research Use Only

A Reliable Research Partner in Life Science and Medicine

Toll-free: 1-888-852-8623

Web: www.elabscience.com

Tel: 1-832-243-6086

Email: techsupport@elabscience.com

Fax: 1-832-243-6017