

Recombinant Cynomolgus B2M/Beta-2-microglobulin Protein (Fc Tag)



Catalog Number:PKSQ050039

Note: Centrifuge before opening to ensure complete recovery of vial contents.

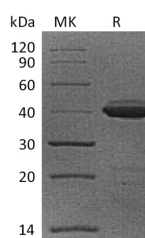
Description

Synonyms	Beta-2-Microglobulin;B2M; β 2-Microglobulin
Species	Cynomolgus macaques
Expression Host	HEK293 Cells
Sequence	Ile21-Met119
Accession	Q8SPW0
Calculated Molecular Weight	38.8 kDa
Observed molecular weight	40 kDa
Tag	C-Fc

Properties

Purity	> 95 % as determined by reducing SDS-PAGE.
Endotoxin	< 1.0 EU per μ g of the protein as determined by the LAL method.
Storage	Generally, lyophilized proteins are stable for up to 12 months when stored at -20 to -80°C. Reconstituted protein solution can be stored at 4-8°C for 2-7 days. Aliquots of reconstituted samples are stable at < -20°C for 3 months.
Shipping	This product is provided as lyophilized powder which is shipped with ice packs.
Formulation	Lyophilized from a 0.2 μ m filtered solution of PBS, pH 7.4. Normally 5 % - 8 % trehalose, mannitol and 0.01% Tween80 are added as protectants before lyophilization. Please refer to the specific buffer information in the printed manual.
Reconstitution	Please refer to the printed manual for detailed information.

Data



> 95 % as determined by reducing SDS-PAGE.

Background

β -2-Microglobulin (B2M) is a secreted protein with 1 Ig-like C1-type (immunoglobulin-like) domain which belongs to the beta-2-microglobulin family. B2M component of major histocompatibility complex (MHC) class I molecules, involved in the presentation of peptide antigens to the immune system. Polymers of beta 2-microglobulin can be found in tissues from patients on long-term hemodialysis. B2M is a protein found on the surface of many cells and plentiful on the surface of white blood cells. Serum B2M concentration is increased in renal diseases, various malignant diseases and some inflammatory and autoimmune disorders. B2M may adopt the fibrillar configuration of amyloid in certain pathologic states. The capacity to assemble into amyloid fibrils is concentration dependent. B2M has been shown as a marker for monitoring inflammatory disease activity and it appears likely to have a destructive role in amyloidosis-related arthritis.

For Research Use Only

A Reliable Research Partner in Life Science and Medicine

Toll-free: 1-888-852-8623

Web: www.elabscience.com

Tel: 1-832-243-6086

Email: techsupport@elabscience.com

Fax: 1-832-243-6017

Recombinant Cynomolgus B2M/Beta-2-microglobulin Protein (Fc Tag)



Catalog Number:PKSQ050039

B2M might be involved in the OA (osteoarthritis) pathogenesis. Defects in B2M are the cause of hypercatabolic hypoproteinemia. Affected individuals show marked reduction in serum concentrations of immunoglobulin and albumin, probably due to rapid degradation. B2M could be a potential therapeutic target in ovarian cancer.

For Research Use Only

A Reliable Research Partner in Life Science and Medicine

Toll-free: 1-888-852-8623

Tel: 1-832-243-6086

Fax: 1-832-243-6017

Web: www.elabscience.com

Email: techsupport@elabscience.com