

# Recombinant Cynomolgus CD38/ADP-ribosyl Cyclase 1 Protein (His Tag)



Catalog Number:PKSQ050048

**Note:** Centrifuge before opening to ensure complete recovery of vial contents.

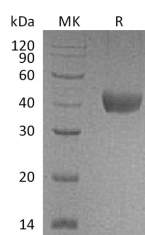
## Description

<b>Synonyms</b>	ADP-ribosyl cyclase 1;cyclic ADP-ribose hydrolase;CD38;T10
<b>Species</b>	Cynomolgus macaques
<b>Expression Host</b>	HEK293 Cells
<b>Sequence</b>	Leu44-Ile301
<b>Accession</b>	Q5VAN0
<b>Calculated Molecular Weight</b>	30.9 kDa
<b>Observed molecular weight</b>	38-50 kDa
<b>Tag</b>	C-His

## Properties

<b>Purity</b>	> 95 % as determined by reducing SDS-PAGE.
<b>Endotoxin</b>	< 1.0 EU per µg of the protein as determined by the LAL method.
<b>Storage</b>	Generally, lyophilized proteins are stable for up to 12 months when stored at -20 to -80°C. Reconstituted protein solution can be stored at 4-8°C for 2-7 days. Aliquots of reconstituted samples are stable at < -20°C for 3 months.
<b>Shipping</b>	This product is provided as lyophilized powder which is shipped with ice packs.
<b>Formulation</b>	Lyophilized from a 0.2 µm filtered solution of 20mM Tris-HCl, 150mM NaCl, pH 8.0. Normally 5 % - 8 % trehalose, mannitol and 0.01 % Tween80 are added as protectants before lyophilization. Please refer to the specific buffer information in the print
<b>Reconstitution</b>	Please refer to the printed manual for detailed information.

## Data



> 95 % as determined by reducing SDS-PAGE.

## Background

CD38, also called ADP-ribosyl cyclase, is a Type II integral membrane protein with 301 amino acids in length that belongs to the ADP-ribosyl cyclase family. It synthesizes the second messengers cyclic ADP-ribose and nicotinate-adenine dinucleotide phosphate, the former a second messenger for glucose-induced insulin secretion. And also moonlights as a receptor in cells of the immune system. CD38 is expressed in B and T lymphocytes, osteoclasts, and in cardiac, pancreatic, liver and kidney cells. Through its production of cyclic ADP-ribose, CD38 modulates calcium-mediated signal transduction in many types of cells, including neutrophils and pancreatic beta cells.

## For Research Use Only

A Reliable Research Partner in Life Science and Medicine

Toll-free: 1-888-852-8623

Web: [www.elabscience.com](http://www.elabscience.com)

Tel: 1-832-243-6086

Email: [techsupport@elabscience.com](mailto:techsupport@elabscience.com)

Fax: 1-832-243-6017