

Recombinant Cynomolgus Interleukin-4 Receptor Subunit Alpha/IL-4 R α Protein (His Tag)



Catalog Number:PKSQ050053

Note: Centrifuge before opening to ensure complete recovery of vial contents.

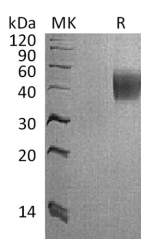
Description

Synonyms	Interleukin-4 receptor subunit alpha;IL-4R-alpha;CD124;IL4-BP;Soluble IL-4R-alpha
Species	Cynomolgus macaques
Expression Host	HEK293 Cells
Sequence	Met26-Arg232
Accession	G7Q0S7
Calculated Molecular Weight	24.6 kDa
Observed molecular weight	38-58 kDa
Tag	C-His
Bioactivity	Measured by its ability to inhibit IL-4-dependent proliferation of TF-1 human erythroleukemic cells.The ED ₅₀ for this effect is 2.38ng/ml.

Properties

Purity	> 95 % as determined by reducing SDS-PAGE.
Endotoxin	< 1.0 EU per μ g of the protein as determined by the LAL method.
Storage	Generally, lyophilized proteins are stable for up to 12 months when stored at -20 to -80°C. Reconstituted protein solution can be stored at 4-8°C for 2-7 days. Aliquots of reconstituted samples are stable at < -20°C for 3 months.
Shipping	This product is provided as lyophilized powder which is shipped with ice packs.
Formulation	Lyophilized from a 0.2 μ m filtered solution of PBS, pH 7.4. Normally 5 % - 8 % trehalose, mannitol and 0.01% Tween80 are added as protectants before lyophilization. Please refer to the specific buffer information in the printed manual.
Reconstitution	Please refer to the printed manual for detailed information.

Data



> 95 % as determined by reducing SDS-PAGE.

Background

Interleukin-4 receptor subunit alpha(IL-4RA), also known as Soluble IL-4 receptor subunit alpha, belongs to the type I cytokine receptor family and type 4 subfamily. It is expressed in both Th1 and Th2 cells. It functions as a receptor for both interleukin 4 and interleukin 13 and couples to the JAK1/2/3-STAT6 pathway. The IL4 response is involved in promoting Th2 differentiation. The IL4/IL13 responses are involved in regulating IgE production and chemokine and mucus production at sites of allergic inflammation. In certain cell types, IL-4RA can signal through activation of the insulin receptor.

For Research Use Only

A Reliable Research Partner in Life Science and Medicine

Toll-free: 1-888-852-8623

Web: www.elabscience.com

Tel: 1-832-243-6086

Email: techsupport@elabscience.com

Fax: 1-832-243-6017

Recombinant Cynomolgus Interleukin-4 Receptor Subunit Alpha/IL-4 R α Protein (His Tag)



Catalog Number:PKSQ050053

substrates, IRS1/IRS2. The functional IL4 receptor is formed by initial binding of IL4 to IL4R. Subsequently it recruits to the complex of the common gamma chain. In immune cells, IL-4RA creates a type I receptor. In non-immune cells, it forms a type II receptor with of IL13RA1. IL4R can also interact with the IL13/IL13RA1 complex to form a similar type II receptor and interacts with the SH2-containing phosphatases, PTPN6/SHIP1, PTPN11/SHIP2 and INPP5D/SHIP.

For Research Use Only

A Reliable Research Partner in Life Science and Medicine

Toll-free: 1-888-852-8623

Tel: 1-832-243-6086

Fax: 1-832-243-6017

Web: www.elabscience.com

Email: techsupport@elabscience.com