

# Recombinant Rhesus macaque CD160 Protein (His Tag)

Catalog Number:PKSQ050080



**Note:** Centrifuge before opening to ensure complete recovery of vial contents.

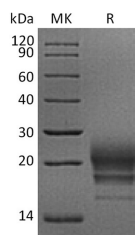
## Description

<b>Synonyms</b>	CD160 antigen;CD160
<b>Species</b>	Rhesus macaque
<b>Expression Host</b>	HEK293 Cells
<b>Sequence</b>	Met1-Leu158
<b>Accession</b>	G7MG20
<b>Calculated Molecular Weight</b>	15.9 kDa
<b>Observed molecular weight</b>	16-30 kDa
<b>Tag</b>	C-His

## Properties

<b>Purity</b>	> 95 % as determined by reducing SDS-PAGE.
<b>Endotoxin</b>	< 1.0 EU per µg of the protein as determined by the LAL method.
<b>Storage</b>	Generally, lyophilized proteins are stable for up to 12 months when stored at -20 to -80°C. Reconstituted protein solution can be stored at 4-8°C for 2-7 days. Aliquots of reconstituted samples are stable at < -20°C for 3 months.
<b>Shipping</b>	This product is provided as lyophilized powder which is shipped with ice packs.
<b>Formulation</b>	Lyophilized from a 0.2 µm filtered solution of PBS, pH 7.4. Normally 5 % - 8 % trehalose, mannitol and 0.01% Tween80 are added as protectants before lyophilization. Please refer to the specific buffer information in the printed manual.
<b>Reconstitution</b>	Please refer to the printed manual for detailed information.

## Data



> 95 % as determined by reducing SDS-PAGE.

## Background

CD160 antigen is a cell membrane protein which contains one Ig-likeV-type (immunoglobulin-like) domain. CD160 is a GPI-anchored lymphocyte surface receptor in which expression is mostly restricted to the highly cytotoxic CD56(dim) CD16(+) peripheral blood NK subset. CD160 is a receptor showing broad specificity for both classical and non-classical MHC class I molecules. CD160 is expressed in spleen, peripheral blood, and small intestine. Expression of CD160 is restricted to functional NK and T cytotoxic lymphocytes. CD160 acts as a co-activator receptor for CD3-induced proliferation of CD4+ CD160+ T cells isolated from inflammatory skin lesions. Activated NK lymphocytes release a soluble form of CD160 that functionally impairs the MHC-I-specific cytotoxic CD8(+) T lymphocyte responsiveness.

## For Research Use Only

A Reliable Research Partner in Life Science and Medicine

Toll-free: 1-888-852-8623

Web: [www.elabscience.com](http://www.elabscience.com)

Tel: 1-832-243-6086

Email: [techsupport@elabscience.com](mailto:techsupport@elabscience.com)

Fax: 1-832-243-6017