

Recombinant *S. cerevisiae* TIM16 Protein

Catalog Number:PKSQ050084



Note: Centrifuge before opening to ensure complete recovery of vial contents.

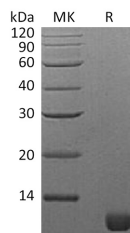
Description

| | |
|------------------------------------|-----------------------------------------------------------------------------------------------------------------------------------|
| Synonyms | Mitochondrial import inner membrane translocase subunit TIM16;Presequence translocated-associated motor subunit PAM16;PAM16;TIM16 |
| Species | <i>S. cerevisiae</i> |
| Expression Host | <i>E.coli</i> |
| Sequence | Thr54-Ala119 |
| Accession | P42949 |
| Calculated Molecular Weight | 7.9 kDa |
| Observed molecular weight | 11 kDa |
| Tag | None |

Properties

| | |
|-----------------------|---------------------------------------------------------------------------------------------------------------------------------------------------------------------------------------------------------------------------------------------------------------|
| Purity | > 95 % as determined by reducing SDS-PAGE. |
| Endotoxin | < 1.0 EU per µg of the protein as determined by the LAL method. |
| Storage | Generally, lyophilized proteins are stable for up to 12 months when stored at -20 to -80°C. Reconstituted protein solution can be stored at 4-8°C for 2-7 days. Aliquots of reconstituted samples are stable at < -20°C for 3 months. |
| Shipping | This product is provided as lyophilized powder which is shipped with ice packs. |
| Formulation | Lyophilized from a 0.2 µm filtered solution of 20mM Tris-HCl, 300mM NaCl, pH 8.0. Normally 5 % - 8 % trehalose, mannitol and 0.01% Tween80 are added as protectants before lyophilization. Please refer to the specific buffer information in the print |
| Reconstitution | Please refer to the printed manual for detailed information. |

Data



> 95 % as determined by reducing SDS-PAGE.

Background

Mitochondrial import inner membrane translocase subunit TIM16 (TIM16) is an essential component of the PAM complex. PAM complex is required for the translocation of transit peptide-containing proteins from the inner membrane into the mitochondrial matrix in an ATP-dependent manner. In the complex, TIM16 is required to regulate activity of mtHSP70 (SSC1) via its interaction with PAM18/TIM14. TIM16 may act by positioning PAM18/TIM14 in juxtaposition to mtHSP70 at the translocon to maximize ATPase stimulation.

For Research Use Only

A Reliable Research Partner in Life Science and Medicine

Toll-free: 1-888-852-8623

Web: www.elabscience.com

Tel: 1-832-243-6086

Email: techsupport@elabscience.com

Fax: 1-832-243-6017