

Recombinant *Vibrio cholerae* Toxin B Protein

Catalog Number:PKSQ050090



Note: Centrifuge before opening to ensure complete recovery of vial contents.

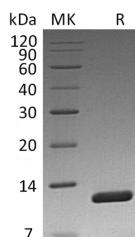
Description

Synonyms	Cholera enterotoxin subunit B;Cholera enterotoxin B chain;Cholera enterotoxin gamma chain;Cholera genoid;ctxB;tox B
Species	<i>Vibrio cholerae</i>
Expression Host	<i>E. coli</i>
Sequence	Thr22-Asn124
Accession	P01556
Calculated Molecular Weight	11.8 kDa
Observed molecular weight	11 kDa
Tag	None

Properties

Purity	> 95 % as determined by reducing SDS-PAGE.
Endotoxin	< 1.0 EU per µg of the protein as determined by the LAL method.
Storage	Generally, lyophilized proteins are stable for up to 12 months when stored at -20 to -80°C. Reconstituted protein solution can be stored at 4-8°C for 2-7 days. Aliquots of reconstituted samples are stable at < -20°C for 3 months.
Shipping	This product is provided as lyophilized powder which is shipped with ice packs.
Formulation	Lyophilized from a 0.2 µm filtered solution of 50mM Tris-HCl, 200mM NaCl, pH 8.0. Normally 5 % - 8 % trehalose, mannitol and 0.01% Tween80 are added as protectants before lyophilization. Please refer to the specific buffer information in the print
Reconstitution	Please refer to the printed manual for detailed information.

Data



> 95 % as determined by reducing SDS-PAGE.

Background

Cholera toxin is protein complex secreted by the bacterium *Vibrio cholerae*. It is responsible for the massive, watery diarrhea characteristic of cholera infection. Cholera enterotoxin subunit B (CTXB) pentameric ring directs the A subunit to its target by binding to the GM1 gangliosides present on the surface of the intestinal epithelial cells. It can bind five GM1 gangliosides. It has no toxic activity by itself.

For Research Use Only

A Reliable Research Partner in Life Science and Medicine

Toll-free: 1-888-852-8623

Web: www.elabscience.com

Tel: 1-832-243-6086

Email: techsupport@elabscience.com

Fax: 1-832-243-6017