

Recombinant Carassius auratus Leptin Protein (His Tag)

Catalog Number:PKSQ050091



Note: Centrifuge before opening to ensure complete recovery of vial contents.

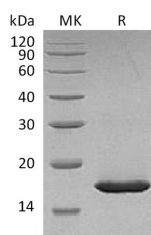
Description

Synonyms	Leptin;Obese Protein;Obesity Factor;LEP;OB;OBS
Species	Carassius auratus
Expression Host	P.Pichia
Sequence	Pro22-Cys171
Accession	B8YI02
Calculated Molecular Weight	18.3 kDa
Observed molecular weight	17 kDa
Tag	N-His

Properties

Purity	> 95 % as determined by reducing SDS-PAGE.
Endotoxin	< 1.0 EU per µg of the protein as determined by the LAL method.
Storage	Generally, lyophilized proteins are stable for up to 12 months when stored at -20 to -80°C. Reconstituted protein solution can be stored at 4-8°C for 2-7 days. Aliquots of reconstituted samples are stable at < -20°C for 3 months.
Shipping	This product is provided as lyophilized powder which is shipped with ice packs.
Formulation	Lyophilized from a 0.2 µm filtered solution of 20mM Citrate, 8% Trehalose, 4% Mannitol, 0.02% Tween80 (w/v), pH 5.5. Normally 5 % - 8 % trehalose, mannitol and 0.01 % Tween80 are added as protectants before lyophilization. Please refer to the speci
Reconstitution	Please refer to the printed manual for detailed information.

Data



> 95 % as determined by reducing SDS-PAGE.

Background

Leptin is a hormone secreted from white adipocytes and plays important role in the regulation of food intake and energy balance. Leptin functions via signaling pathways involving OB-R in hypothalamus. In mammals, leptin is mainly produced by the adipose tissue and encodes body fat reserves, acting as a short-term satiety signal. In fish, the presence of a leptin-like peptide was first evidenced by immuno-cross-reactivity, and its existence was certainly demonstrated after the finding by synteny of a leptin sequence in the pufferfish.

For Research Use Only

A Reliable Research Partner in Life Science and Medicine

Toll-free: 1-888-852-8623

Web: www.elabscience.com

Tel: 1-832-243-6086

Email: techsupport@elabscience.com

Fax: 1-832-243-6017