

# Recombinant Mouse Host Cell Factor 2/HCFC2 Protein (His Tag)



Catalog Number:PKSM041254

**Note:** Centrifuge before opening to ensure complete recovery of vial contents.

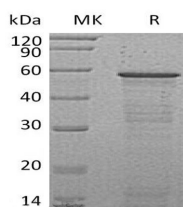
## Description

<b>Synonyms</b>	Host cell factor 2;HCF-2;C2 factor;Hcfc2
<b>Species</b>	Mouse
<b>Expression Host</b>	E.coli
<b>Sequence</b>	Met1-Glu486
<b>Accession</b>	G5E837
<b>Calculated Molecular Weight</b>	55.2 kDa
<b>Observed molecular weight</b>	55 kDa
<b>Tag</b>	N-His

## Properties

<b>Purity</b>	> 95 % as determined by reducing SDS-PAGE.
<b>Endotoxin</b>	< 1.0 EU per µg of the protein as determined by the LAL method.
<b>Storage</b>	Store at < -20°C, stable for 6 months. Please minimize freeze-thaw cycles.
<b>Shipping</b>	This product is provided as liquid. It is shipped at frozen temperature with blue ice/gel packs. Upon receipt, store it immediately at < - 20°C.
<b>Formulation</b>	Supplied as a 0.2 µm filtered solution of PBS, 2M Urea, pH 7.4.
<b>Reconstitution</b>	Not Applicable

## Data



> 95 % as determined by reducing SDS-PAGE.

## Background

Host cell factor 2(HCFC2) is a cytoplasmic protein. It contains 2 fibronectin type-III domains.HCFC2 binds KMT2A/MLL1, as component of the MLL1/MLL complex.Hcfc2 negative regulation of transcription from RNA polymerase II promoter.

## For Research Use Only

A Reliable Research Partner in Life Science and Medicine

Toll-free: 1-888-852-8623

Web: [www.elabscience.com](http://www.elabscience.com)

Tel: 1-832-243-6086

Email: [techsupport@elabscience.com](mailto:techsupport@elabscience.com)

Fax: 1-832-243-6017