

## REG4 Polyclonal Antibody

**Catalog No.** E-AB-40315

*Note:* Centrifuge before opening to ensure complete recovery of vial contents.

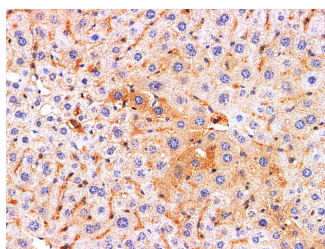
### Description

<b>Reactivity</b>	Mouse,Rat
<b>Immunogen</b>	Recombinant Rat Regenerating islet-derived protein 4 protein
<b>Host</b>	Rabbit
<b>Isotype</b>	IgG
<b>Purification</b>	Antigen Affinity Purification
<b>Conjugation</b>	Unconjugated
<b>Buffer</b>	PBS with 0.05% Proclin300 and 50% glycerol, pH7.4.

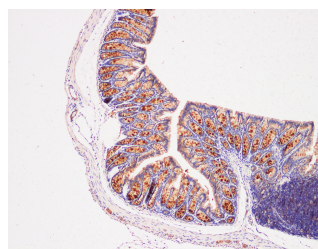
### Applications Recommended Dilution

**IHC 1:100-1:300**

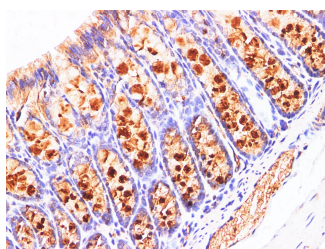
### Data



Immunohistochemistry of paraffin-embedded Rat liver using REG4 Polyclonal Antibody at dilution of 1:200.



Immunohistochemistry of paraffin-embedded Mouse colon using REG4 Polyclonal Antibody at dilution of 1:200@100x.



Immunohistochemistry of paraffin-embedded Mouse colon using REG4 Polyclonal Antibody at dilution of 1:200@400x.

### Preparation & Storage

**Storage** Store at -20°C. Avoid freeze / thaw cycles.

### Background

The protein encoded by this gene is a member of the S100 family of proteins containing 2 EF-hand calcium-binding motifs.

### For Research Use Only

S100 proteins are localized in the cytoplasm and/or nucleus of a wide range of cells, and involved in the regulation of a number of cellular processes such as cell cycle progression and differentiation. S100 genes include at least 13 members which are located as a cluster on chromosome 1q21.