

S100A9 Polyclonal Antibody

Catalog No. E-AB-40316

Note: Centrifuge before opening to ensure complete recovery of vial contents.

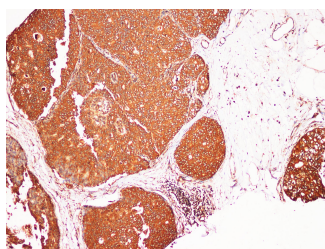
Description

Reactivity	Human
Immunogen	Recombinant Human Protein S100-A9 protein
Host	Rabbit
Isotype	IgG
Purification	Antigen Affinity Purification
Conjugation	Unconjugated
Buffer	PBS with 0.02% sodium azide, 1% protective protein and 50% glycerol, pH 7.4

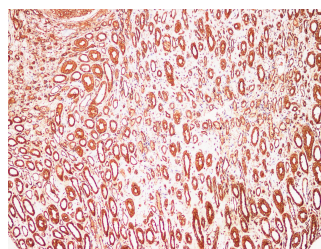
Applications Recommended Dilution

IHC 1:100-1:400

Data



Immunohistochemistry of paraffin-embedded Human breast cancer using S100A9 Polyclonal Antibody at dilution of 1:200.



Immunohistochemistry of paraffin-embedded Human kidney using S100A9 Polyclonal Antibody at dilution of 1:200.

Preparation & Storage

Storage Store at -20°C. Avoid freeze / thaw cycles.

Background

The protein encoded by this gene is a member of the S100 family of proteins containing 2 EF-hand calcium-binding motifs. S100 proteins are localized in the cytoplasm and/or nucleus of a wide range of cells, and involved in the regulation of a number of cellular processes such as cell cycle progression and differentiation. S100 genes include at least 13 members which are located as a cluster on chromosome 1q21.

For Research Use Only