

c-SRC Polyclonal Antibody

Catalog No. E-AB-40318

Note: Centrifuge before opening to ensure complete recovery of vial contents.

Description

Reactivity	Human, Mouse, Rat
Immunogen	Recombinant Human Proto-oncogene tyrosine-protein kinase Src protein
Host	Rabbit
Isotype	IgG
Purification	Antigen Affinity Purification
Conjugation	Unconjugated
Buffer	PBS with 0.05% Proclin300 and 50% glycerol, pH7.4.

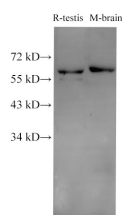
Applications

Recommended Dilution

WB 1:1000-1:2000

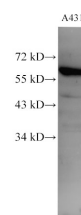
IHC 1:100-1:300

Data

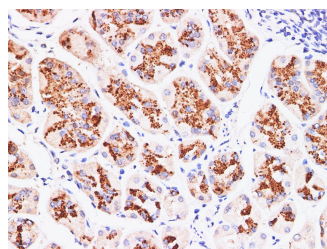


Western Blot analysis of Rat testis and Mouse brain using c-SRC Polyclonal Antibody at dilution of 1:1000.

Observed Mw:60 kDa
Calculated Mw:60 kDa



Western Blot analysis of A431 using c-SRC Polyclonal Antibody at dilution of 1:1000.



Immunohistochemistry of paraffin-embedded Human stomach cancer using c-SRC Polyclonal Antibody at dilution of 1:200.

Preparation & Storage

Storage Store at -20°C. Avoid freeze / thaw cycles.

For Research Use Only

Background

SRC, also named as SRC1 and p60-Src, belongs to the protein kinase superfamily, Tyr protein kinase family and SRC subfamily. It is a non-receptor protein tyrosine kinase that plays pivotal roles in numerous cellular processes such as proliferation, migration, and transformation. In concert with PTK2B, SRC plays an important role in osteoclastic bone resorption. It promotes energy production in osteoclasts by activating mitochondrial cytochrome C oxidase.

For Research Use Only