

## AFP Polyclonal Antibody

Catalog No. E-AB-40304

*Note:* Centrifuge before opening to ensure complete recovery of vial contents.

### Description

<b>Reactivity</b>	Human, Mouse
<b>Immunogen</b>	Recombinant Human Alpha-fetoprotein protein
<b>Host</b>	Rabbit
<b>Isotype</b>	IgG
<b>Purification</b>	Antigen Affinity Purification
<b>Conjugation</b>	Unconjugated
<b>Buffer</b>	PBS with 0.05% Proclin300 and 50% glycerol, pH7.4.

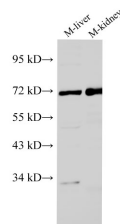
### Applications

### Recommended Dilution

**WB 1:1000-1:2000**

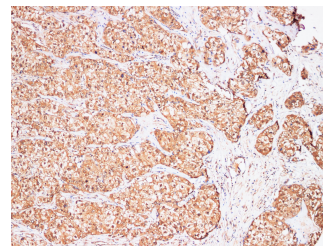
**IHC 1:100-1:400**

### Data

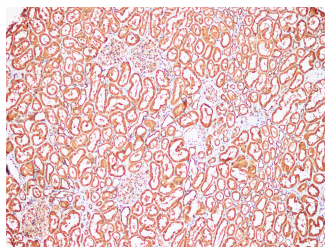


Western Blot analysis of Mouse liver and Mouse kidney using AFP Polyclonal Antibody at dilution of 1:1000.

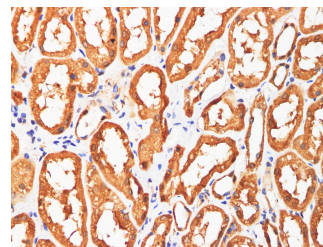
**Observed Mw:68 kDa**  
**Calculated Mw:68 kDa**



Western Blot analysis of Mouse liver and Mouse kidney using AFP Polyclonal Antibody at dilution of 1:1000.

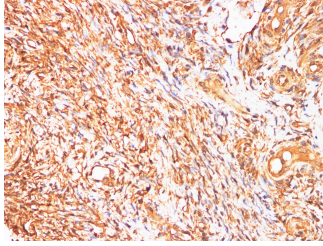


Immunohistochemistry of paraffin-embedded Human kidney using AFP Polyclonal Antibody at dilution of 1:200(100x).

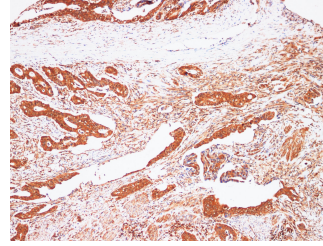


Immunohistochemistry of paraffin-embedded Human kidney using AFP Polyclonal Antibody at dilution of 1:200(400x).

### For Research Use Only



Immunohistochemistry of paraffin-embedded Human ovary using AFP Polyclonal Antibody at dilution of 1:200.



Immunohistochemistry of paraffin-embedded Human stomach cancer using AFP Polyclonal Antibody at dilution of 1:200 at 100x magnification.

## Preparation & Storage

**Storage** Store at -20°C. Avoid freeze / thaw cycles.

## Background

This gene encodes alpha-fetoprotein, a major plasma protein produced by the yolk sac and the liver during fetal life. Alpha-fetoprotein expression in adults is often associated with hepatoma or teratoma. However, hereditary persistence of alpha-fetoprotein may also be found in individuals with no obvious pathology. The protein is thought to be the fetal counterpart of serum albumin, and the alpha-fetoprotein and albumin genes are present in tandem in the same transcriptional orientation on chromosome 4. Alpha-fetoprotein is found in monomeric as well as dimeric and trimeric forms, and binds copper, nickel, fatty acids and bilirubin. The level of alpha-fetoprotein in amniotic fluid is used to measure renal loss of protein to screen for spina bifida and anencephaly.

## For Research Use Only