

Recombinant Human KIM-1(C-6His)

Catalog Number:PKSH033813



Note: Centrifuge before opening to ensure complete recovery of vial contents.

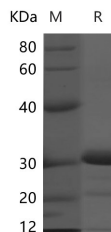
Description

Synonyms	HAVCR1;HAVCR;HAVCR-1;KIM-1;KIM1;TIM;TIM-1;TIM1;TIMD-1;TIMD1;Hepatitis A virus cellular receptor 1
Species	Human
Expression Host	HEK293 Cells
Sequence	Ser21-Gly290
Accession	F1CME6
Calculated Molecular Weight	29.8 kDa
Observed molecular weight	80-120 kDa
Tag	C-His

Properties

Purity	> 90 % as determined by reducing SDS-PAGE.
Endotoxin	Please contact us for more information.
Storage	Store at < -20°C, stable for 6 months. Please minimize freeze-thaw cycles.
Shipping	This product is provided as liquid. It is shipped at frozen temperature with blue ice/gel packs. Upon receipt, store it immediately at < - 20°C.
Formulation	Supplied as a 0.2 µM filtered solution of PBS,pH7.4,5% Trehalose
Reconstitution	Not Applicable

Data



> 90 % as determined by reducing SDS-PAGE.

Background

Kidney injury molecule-1 (KIM-1) (also known as TIM-1 and HAVCR) is a type 1 transmembrane glycoprotein found on activated CD4+ T cells, especially Th2 cells, and dedifferentiated proximal tubule epithelial cells. In humans, KIM-1 levels are very low or undetectable in normal samples, but following drug toxicity or ischemic damage to the kidney, the 85 kD, mucin-rich extracellular region of this molecule is shed and detected at elevated levels in urine, serum, and plasma. Therefore, KIM-1 is a suitable renal biomarker capable of early detection and progressive monitoring of acute kidney injury beyond traditional injury markers such as serum creatinine (SCr) and blood urea nitrogen (BUN) which lack specificity and sensitivity. KIM-1 has also been implicated in the development of atopic airway disease (asthma) and Th2-biased autoimmune responses.

For Research Use Only

A Reliable Research Partner in Life Science and Medicine

Toll-free: 1-888-852-8623

Web: www.elabscience.com

Tel: 1-832-243-6086

Email: techsupport@elabscience.com

Fax: 1-832-243-6017