

BCL2 Monoclonal Antibody

Catalog No. E-AB-22004

Note: Centrifuge before opening to ensure complete recovery of vial contents.

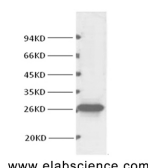
Description

Reactivity	Human
Immunogen	Synthetic Peptide
Host	Mouse
Isotype	IgG
Clone	2E3
Purification	Protein A purification
Conjugation	Unconjugated
Buffer	PBS with 0.02% sodium azide and 50% glycerol pH 7.4.

Applications Recommended Dilution

WB	1:1000-2000
-----------	-------------

Data



Western Blot analysis of HeLa cells using BCL2 Monoclonal Antibody at dilution of 1:1000.

Observed Mw:26kDa
Calculated Mw:26kDa

Preparation & Storage

Storage Store at -20°C. Avoid freeze / thaw cycles.

Background

Suppresses apoptosis in a variety of cell systems including factor-dependent lymphohematopoietic and neural cells. Regulates cell death by controlling the mitochondrial membrane permeability. Appears to function in a feedback loop system with caspases. Inhibits caspase activity either by preventing the release of cytochrome c from the mitochondria and/or by binding to the apoptosis-activating factor (APAF-1).

For Research Use Only