

Galectin 3 Monoclonal Antibody

Catalog No. E-AB-22006

Note: Centrifuge before opening to ensure complete recovery of vial contents.

Description

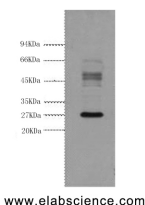
Reactivity	Human
Immunogen	Synthetic Peptide
Host	Mouse
Isotype	IgG
Clone	4E2
Purification	Protein A purification
Conjugation	Unconjugated
Buffer	PBS with 0.02% sodium azide and 50% glycerol pH 7.4.

Applications

Recommended Dilution

WB	1:1000-1:3000
IHC	1:100-1:300
IF	1:100-200

Data



www.elabscience.com

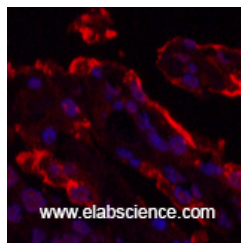
Western Blot analysis of HeLa cells using Galectin 3 Monoclonal Antibody at dilution of 1:3000.

Observed Mw:26kDa
Calculated Mw:26kDa



www.elabscience.com

Immunohistochemistry of paraffin-embedded Human thyroid tissue using Galectin 3 Monoclonal Antibody at dilution of 1:200.



www.elabscience.com

Immunofluorescence analysis of Human lung cancer tissue using Galectin 3 Monoclonal Antibody at dilution of 1:200.

For Research Use Only

Preparation & Storage

Storage Store at -20°C. Avoid freeze / thaw cycles.

Background

Galactose-specific lectin which binds IgE. May mediate with the alpha-3, beta-1 integrin the stimulation by CSPG4 of endothelial cells migration. Together with DMBT1, required for terminal differentiation of columnar epithelial cells during early embryogenesis.