

## ERBB2 Monoclonal Antibody

Catalog No. E-AB-22008

*Note:* Centrifuge before opening to ensure complete recovery of vial contents.

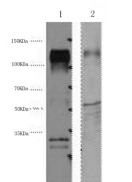
### Description

|                     |  |
|---------------------|--|
| <b>Reactivity</b>   | Human, Mouse, Rat                                    |
| <b>Immunogen</b>    | Synthetic Peptide                                    |
| <b>Host</b>         | Mouse  |
| <b>Isotype</b>      | IgG  |
| <b>Clone</b>        | 4E7  |
| <b>Purification</b> | Protein A purification                               |
| <b>Conjugation</b>  | Unconjugated   |
| <b>Buffer</b>       | PBS with 0.02% sodium azide and 50% glycerol pH 7.4. |

### Applications Recommended Dilution

|            |              |
|------------|--------------|
| <b>WB</b>  | 1:500-1:4000 |
| <b>IHC</b> | 1:100-1:300  |
| <b>IF</b>  | 1:100-1:300  |

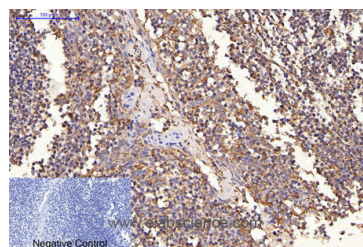
### Data



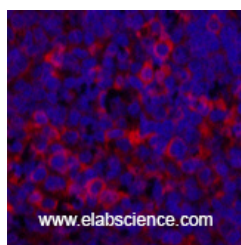
www.elabscience.com

Western Blot analysis of 1) Hela, 2) Mouse brain using ERBB2 Monoclonal Antibody at dilution of 1:4000.

**Observed Mw:138kDa**  
**Calculated Mw:138kDa**



Immunohistochemistry of paraffin-embedded Human tonsil tissue using ERBB2 Monoclonal Antibody at dilution of 1:200.



www.elabscience.com

Immunofluorescence analysis of Rat spleen tissue using ERBB2 Monoclonal Antibody at dilution of 1:200.

### For Research Use Only

## Preparation & Storage

**Storage** Store at -20°C. Avoid freeze / thaw cycles.

## Background

Protein tyrosine kinase that is part of several cell surface receptor complexes, but that apparently needs a coreceptor for ligand binding. Essential component of a neuregulin-receptor complex, although neuregulins do not interact with it alone. GP30 is a potential ligand for this receptor. Regulates outgrowth and stabilization of peripheral microtubules (MTs). Upon ERBB2 activation, the MEMO1-RHOA-DIAPH1 signaling pathway elicits the phosphorylation and thus the inhibition of GSK3B at cell membrane. This prevents the phosphorylation of APC and CLASP2, allowing its association with the cell membrane. In turn, membrane-bound APC allows the localization of MACF1 to the cell membrane, which is required for microtubule capture and stabilization. In the nucleus is involved in transcriptional regulation. Associates with the 5'-TCAAATTC-3' sequence in the PTGS2/COX-2 promoter and activates its transcription. Implicated in transcriptional activation of CDKN1A; the function involves STAT3 and SRC. Involved in the transcription of rRNA genes by RNA Pol I and enhances protein synthesis and cell growth.

## For Research Use Only