

CD20 Monoclonal Antibody

Catalog No. E-AB-22011

Note: Centrifuge before opening to ensure complete recovery of vial contents.

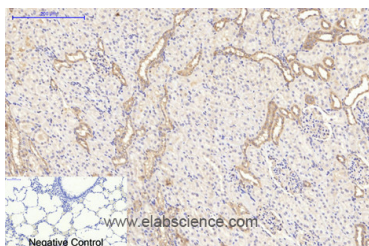
Description

Reactivity	Human,Mouse,Rat
Immunogen	Synthetic Peptide
Host	Mouse
Isotype	IgG
Clone	Clone:1A3
Purification	Protein A purification
Conjugation	Unconjugated
Buffer	PBS with 0.02% sodium azide and 50% glycerol pH 7.4.

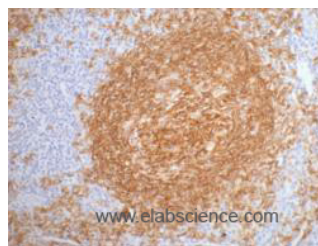
Applications Recommended Dilution

IHC 1:50-200

Data



Immunohistochemistry of paraffin-embedded Rat lung tissue using CD20 Monoclonal Antibody at dilution of 1:200.



Immunohistochemistry of paraffin-embedded Human tonsil tissue using CD20 Monoclonal Antibody at dilution of 1:200.

Preparation & Storage

Storage Store at -20°C. Avoid freeze / thaw cycles.

Background

This gene encodes a member of the membrane-spanning 4A gene family. Members of this nascent protein family are characterized by common structural features and similar intron/exon splice boundaries and display unique expression patterns among hematopoietic cells and nonlymphoid tissues. This gene encodes a B-lymphocyte surface molecule which plays a role in the development and differentiation of B-cells into plasma cells. This family member is localized to 11q12, among a cluster of family members. Alternative splicing of this gene results in two transcript variants which encode the same protein.

For Research Use Only